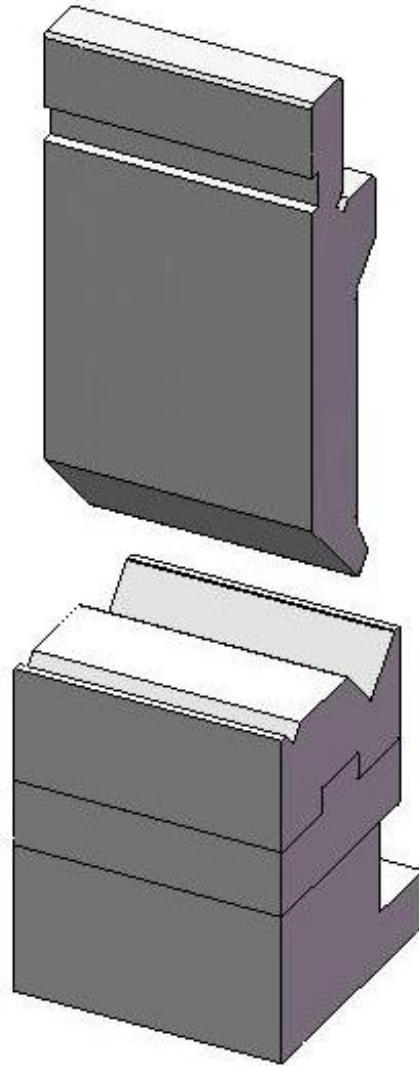


# 折弯机模具

## Press Brake Tooling



## 目录/content

自由折弯的折弯压力对照表/Capacity chart for air bending .....	2
上模夹紧形式/Upper tooling clamping .....	3
下模夹紧形式/Dies tooling clamping.....	5
标准上模/Standard punches.....	7
标准上模 85° /Standard punches 85° .....	8
标准上模 88° /Standard punches 88° .....	10
标准上模 90° /Standard punches 90° .....	12
标准上模 60° /Standard punches 60° .....	13
标准上模 26° 30° 35° /Standard punches 26° 30° 35° .....	14
标准 R 型圆模/Standard R-type round tooling .....	15
标准圆模/Standard round tooling.....	17
复平模具/Flattening tooling .....	18
标准 Z 型模/Standard Z-type tooing .....	20
上模附件/Accessories of upper tooling .....	21
1V 下模/1V lower dies.....	22
2V 下模/2V lower dies.....	34
多 V 下模/multi-V lower dies .....	38
组合凹模/Combined dies.....	40
下模附件/Accessories of lower dies .....	41

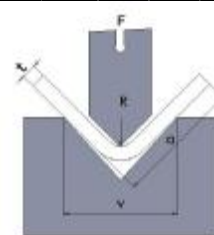
# 自由折弯的折弯压力对照表

## Capacity chart for air bending

本表格中的数据是在 90° 折弯，材料抗拉强度  $\delta b=420\text{MPa}$ ，折弯长度为 1m 基础上计算的结果。

The given data has been calculated based upon bending material with a tensile strength of  $\delta b=420\text{ MPa}$  over a length of 1m.

V	6	8	10	12	16	18	20	24	32	35	40	50	60	63	80	100	120	130	140	150	160	180	190	200	230	260
b	4.5	5	7	8.5	12	13	15	17	23	25	28	35	43	45	57	71	85	92	100	105	115	130	135	140	160	180
r	1	1.2	1.6	2	2.5	2.8	3	3.5	5	5.5	6	8	9.5	10	12	15.5	19	21	23	24.5	26	28	30	32	36	40
0.5	2.5																									
0.8	7	4.8																								
1.0	11	8	6																							
1.2		12	9	7																						
1.5			15	12	8																					
2.0				23	16	13	12	9.5																		
2.5					26	22	20	15	11																	
3.0							30	24	16	14	12															
4.0								44	31	28	23	18														
5.0									53	47	43	31	25													
6.0											61	45	36	34												
8.0												88	69	65	47	36										
10														110	80	60	47	43	39							
12															120	90	71	65	58	55	50					
16																	140	125	115	105	95	81	80	71		
18																			148	135	125	110	100	95	80	
20																						140	130	120	110	90



内径 R 约等于凹模开口宽度 V 的 16%

The internal radius R corresponds to approximate 16% of the die opening V

自由折弯建议凹模开口宽度 V

Recommended die opening V for air bending

材料厚度/Material thickness	t	0.5~2.5mm	3~8mm	9~10mm	>12mm
凹模开口宽度/Die opening	V	$6 \times t$	$8 \times t$	$10 \times t$	$12 \times t$

折弯力/Bending force for

铝 Alu	$\delta b=300\text{ MPa}$	$F=F(\text{表}) \times 0.65$ $F=F(\text{chart}) \times 0.65$
不锈钢 S.S	$\delta b=700\text{ MPa}$	$F=F(\text{表}) \times 1.6$ $F=F(\text{chart}) \times 1.6$

折弯压力吨位计算公式 (参考值)

Determination of the bending force for air bending (approximation)

$$F(\text{chart}) = 65 \times t^2 / V \quad (\text{Ton} / \text{m})$$

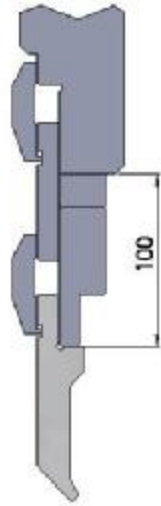
## 上模夹紧形式

### Upper tooling clamping

#### 普通斜楔夹紧

#### common wedge clamping

---

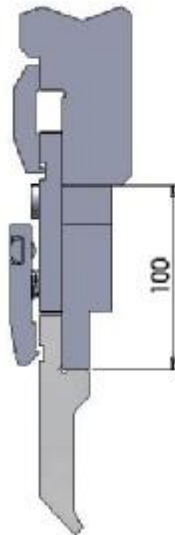


实用于 50t~220t 之间欧式上模的安装  
Suited to 50t~220t machines installing of Europe  
type punch

#### 机械快速夹紧

#### Mechanical rapid clamping

---

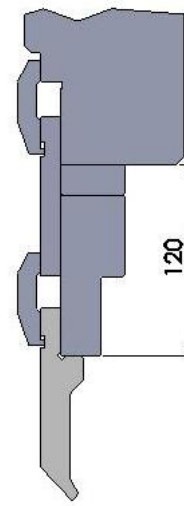


快夹可以方便欧式上模的快速安装  
Rapid clamping is convenient to installing the  
European type punch quickly

#### 重型斜楔夹紧

#### High-duty wedge clamping

---

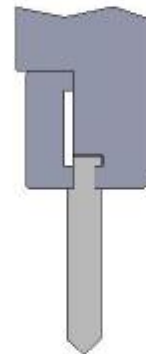


实用于 220t 以上欧式上模的安装  
Suited to the installing of Europe type punch over  
220t nominal pressure machines

#### 美式夹紧

#### American type clamping

---



适用于美式上模的安装  
Suited to install the American type punch

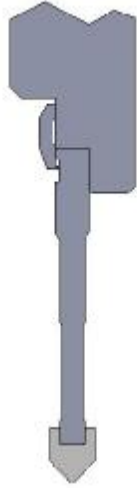
## 上模夹紧形式

Upper tooling clamping

过渡模柄夹紧

transition punch –shank clamping

---



适用于大行程机床的安装

Suited to install the big stroke machine

上模液压夹紧

upper tooling hydraulic clamping

---



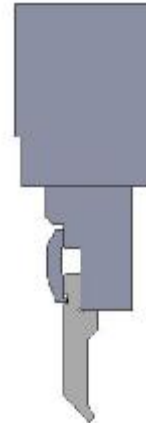
适用于上模的快速安装

Suited to install the upper tooling quickly

过渡联接块

transition link-block

---



适用于滑块受重载的安装

Suited to install the ram which bear overload

WILA 上模液压夹紧式

WILA upper tooling hydraulic clamping type

---



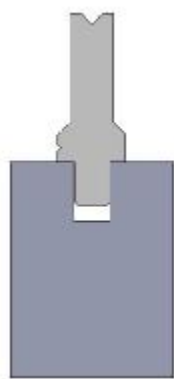
NSCL II with Top with Safety Click

## 下模夹紧形式

### Dies tooling clamping

1V 插槽式  
1V slot

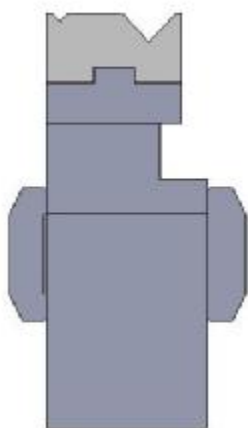
---



模具肩部受力  
the shoulder of tooling  
bear the force

2V 快换式  
2V quick-change type

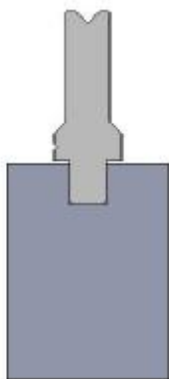
---



下模口可快速更换  
the die open can be quick changed

1V 插槽式  
1V slot

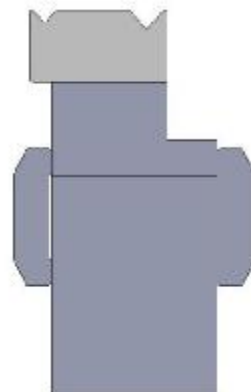
---



模具底部受力  
the bottom of tooling  
bear the force

2V 可调式  
2V adjustable

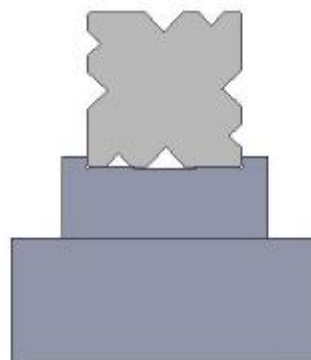
---



下模口可前后调节  
the die open can be adjusted  
front and back

多 V 插槽分段式  
multi-V slot subsection

---



适用于分段多 V 下模  
Suited to subsection multi-V  
bottom tooling

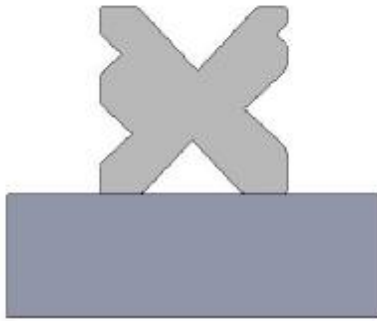
## 下模夹紧形式

Dies tooling clamping

### 多 V 工作台式

multi-V worktable type

---



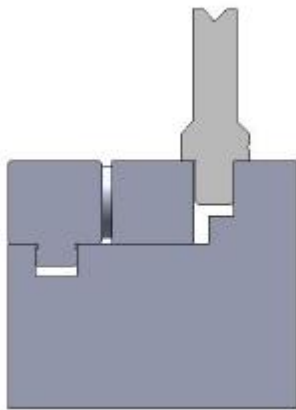
适用于整体多 V 下模

Suited to whole multi-V bottom tooling

### 下模液压夹紧

bottom tooling hydranlic clamping

---



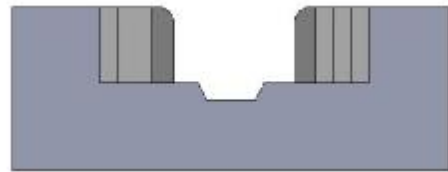
适用于 1V 下模快速安装

Suited to quick install the 1V bottom tooling

### 下模插片式

insert type for bottom tooling

---



模口可分级增大，适用于大吨位折弯机

the die orifice can graded increase apply to big tons pressbrake

### 液压夹紧工作台

Hydranlic clamping worktable

---



NSCR II with OZU bottom tooling

## 标准上模

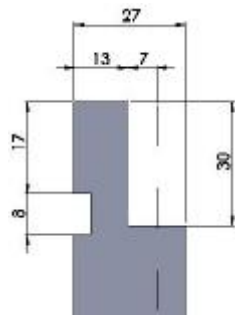
Standard punches

### 上模模柄结构

Upper tooling fixtures

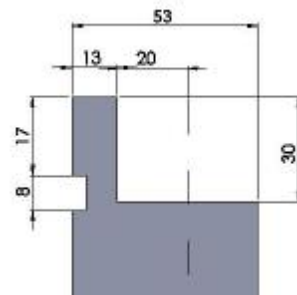
#### 标准欧式

European type tooling



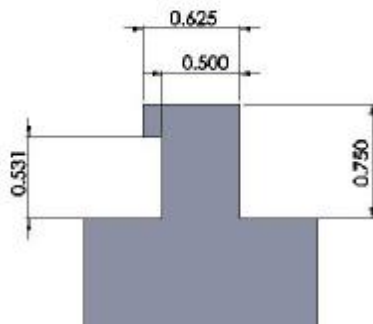
#### 加强型欧式

European type tooling



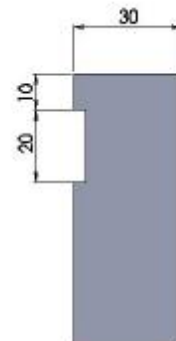
#### 美式

American style premium tooling



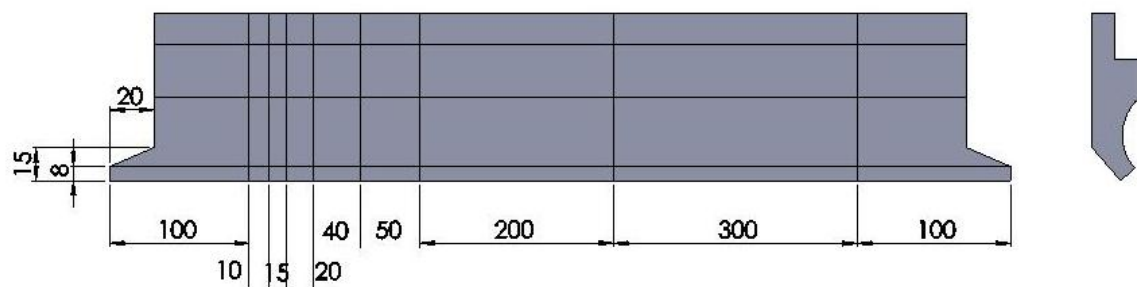
#### 大吨位过渡模柄

Transition punch-shank for big tons machine



### 上刀标准分段方式

Segmentation of punch



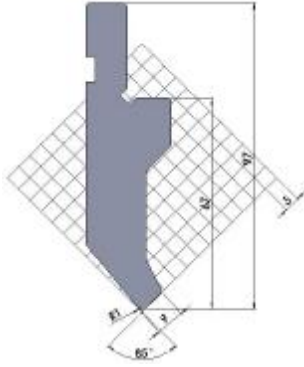


# 标准上模 85°

## Standard punches 85°

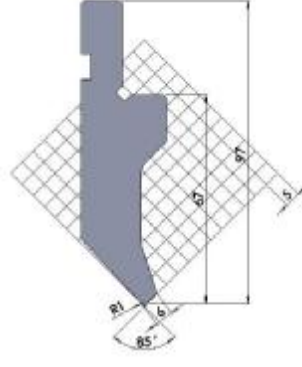
10.100

Max Tons:100t/m



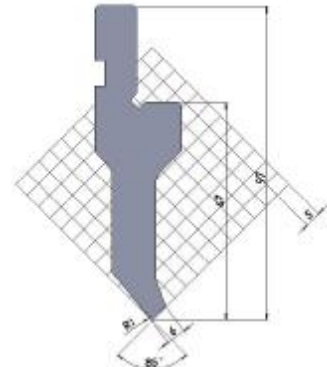
10.101

Max Tons:80t/m



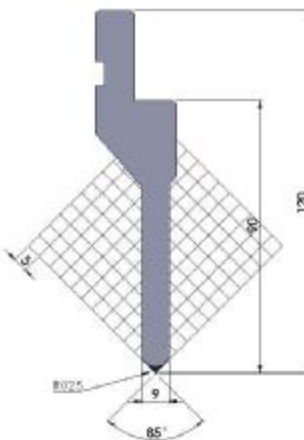
10.102

Max Tons:60t/m



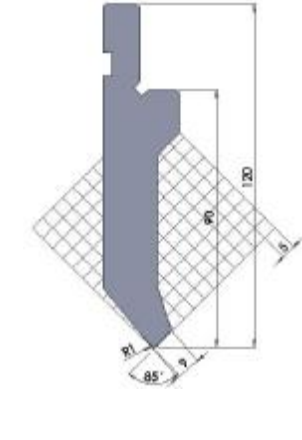
10.103

Max Tons:80t/m



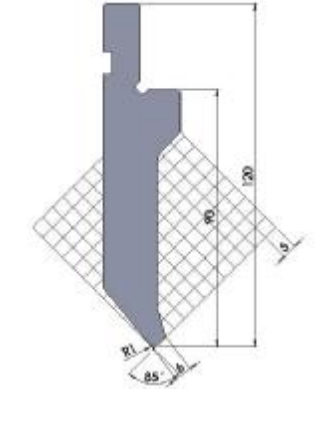
10.104

Max Tons:100t/m



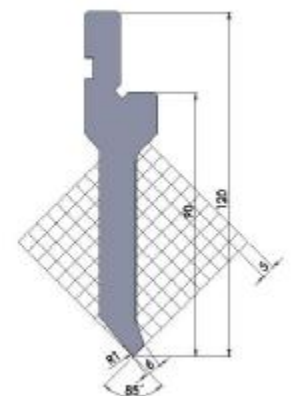
10.105

Max Tons:80t/m



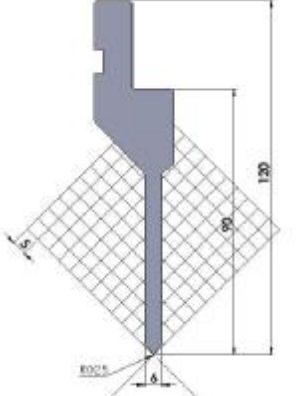
10.106

Max Tons:50t/m



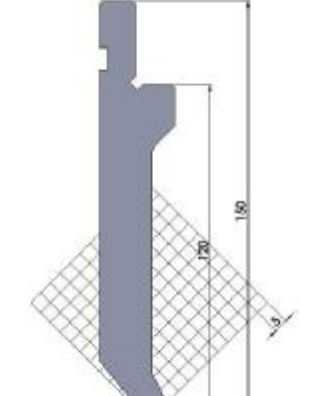
10.107

Max Tons:50t/m



10.108

Max Tons:100t/m

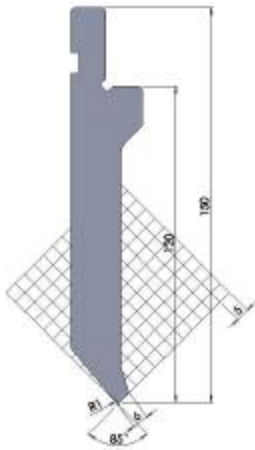


# 标准上模 85°

## Standard punches 85°

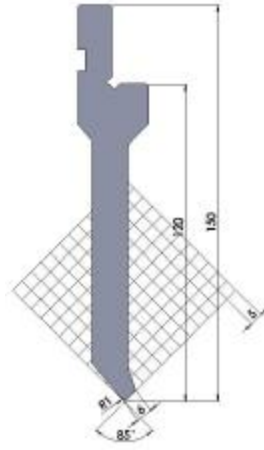
10.109

Max Tons:80t/m



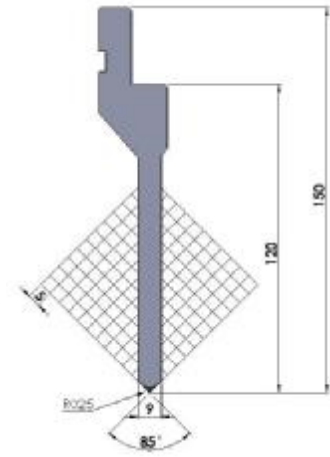
10.110

Max Tons:40t/m



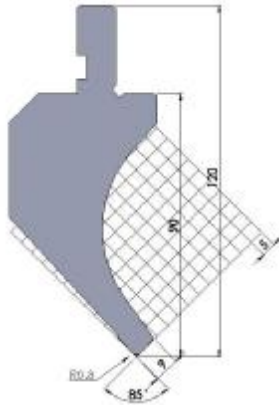
10.111

Max Tons:80t/m



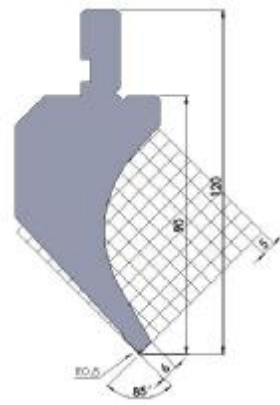
10.112

Max Tons:70t/m



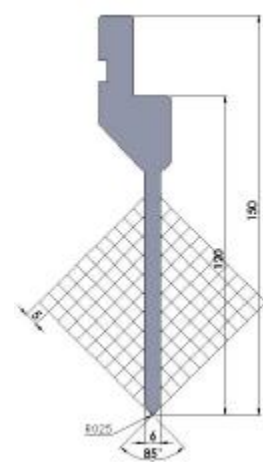
10.113

Max Tons:40t/m



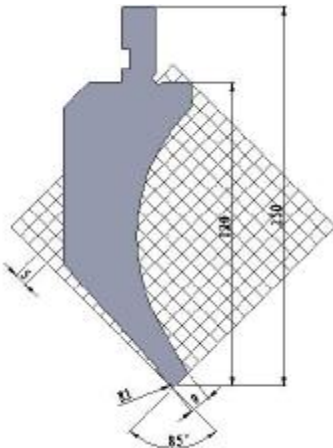
10.114

Max Tons:50t/m



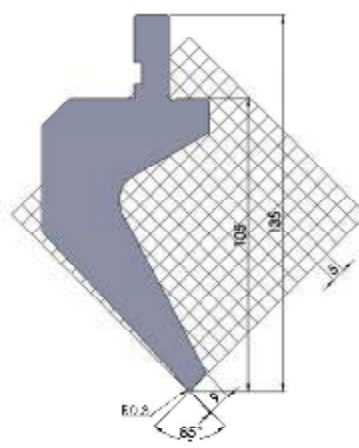
10.115

Max Tons:50t/m



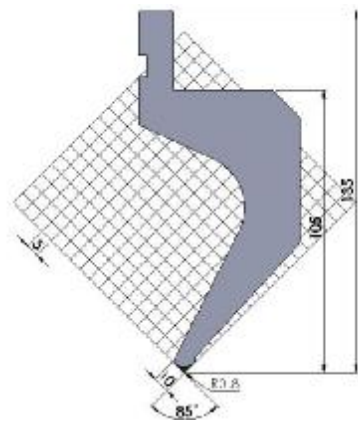
10.116

Max Tons:60t/m



10.117

Max Tons:45t/m

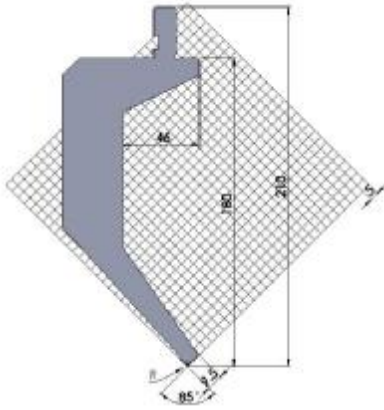


## 标准上模 85°

### Standard punches 85°

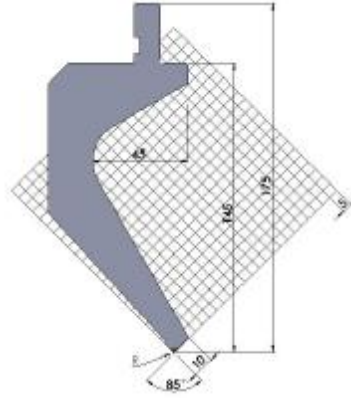
10.118

Max Tons:80t/m



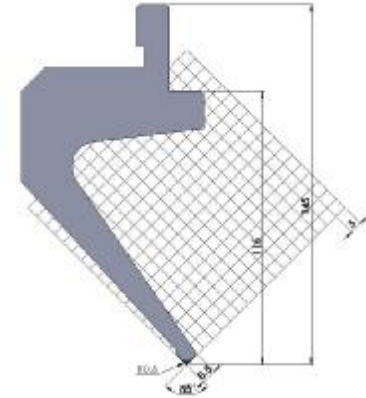
10.119

Max Tons:80t/m



10.120

Max Tons:50t/m

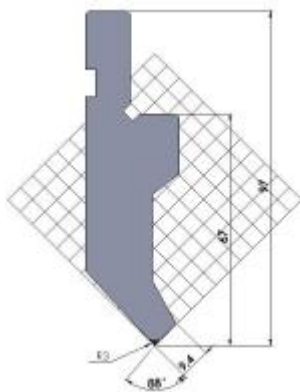


## 标准上模 88°

### Standard punches 88°

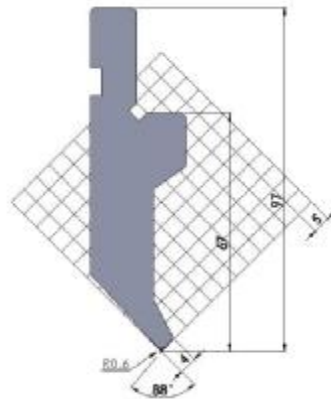
10.130

Max Tons:100t/m



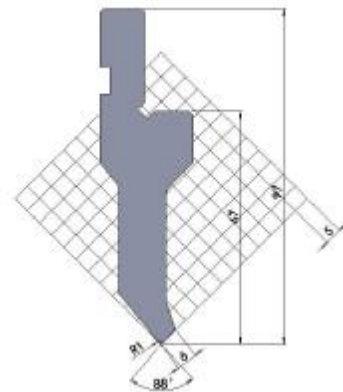
10.131

Max Tons:80t/m



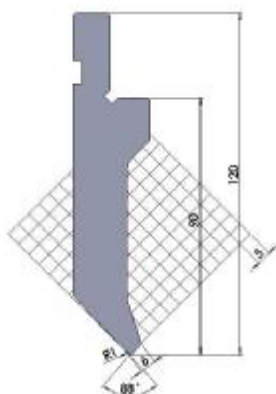
10.132

Max Tons:60t/m



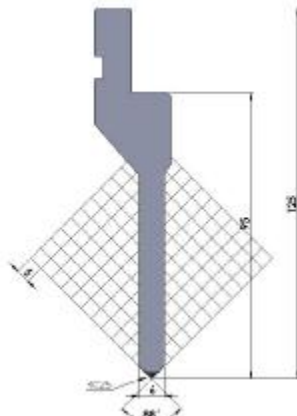
10.133

Max Tons:100t/m



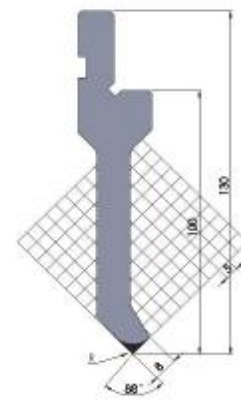
10.134

Max Tons:50t/m



10.135

Max Tons:20t/m

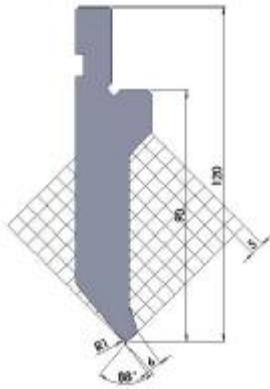


# 标准上模 88°

## Standard punches 88°

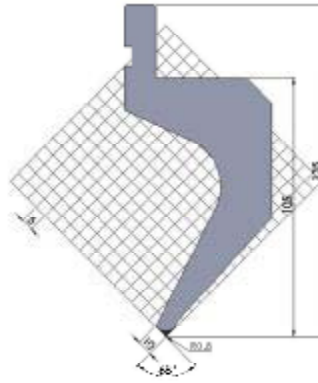
10.136

Max Tons: 80t/m



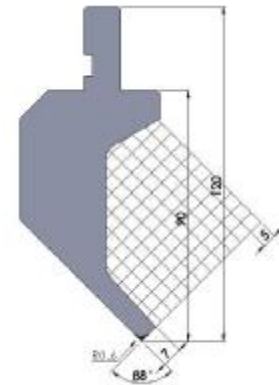
10.137

Max Tons: 45t/m



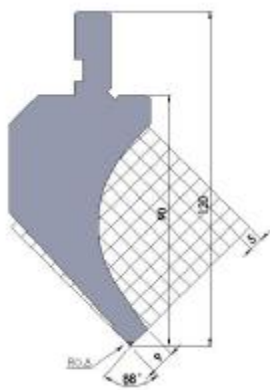
10.138

Max Tons: 20t/m



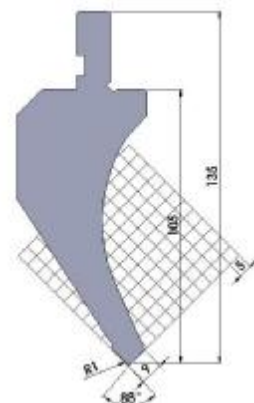
10.139

Max Tons: 70t/m



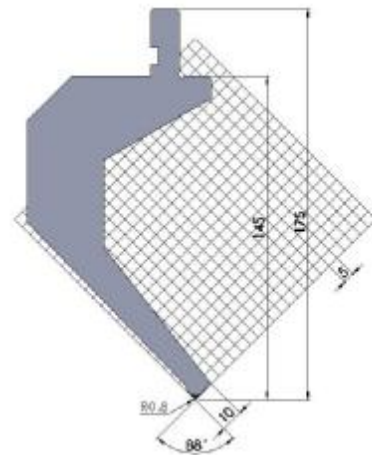
10.140

Max Tons: 50t/m



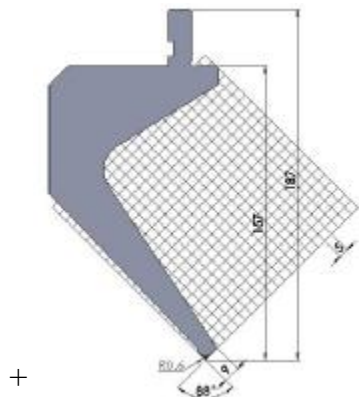
10.141

Max Tons: 50t/m



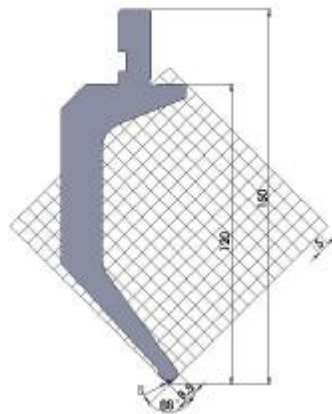
10.142

Max Tons: 30t/m



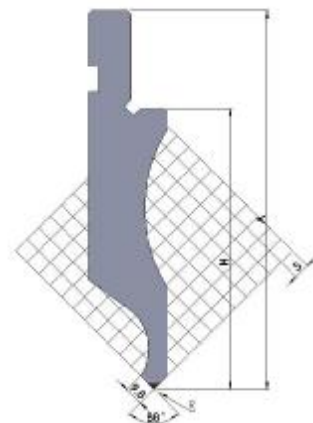
10.143

Max Tons: 20t/m



10.144

Max Tons: 50t/m



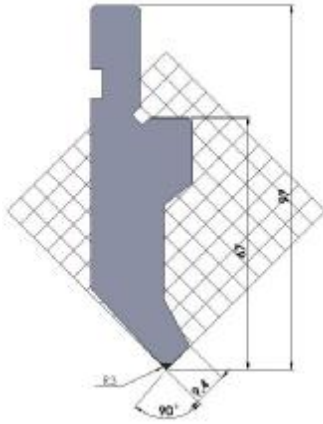


# 标准上模 90°

## Standard punches 90°

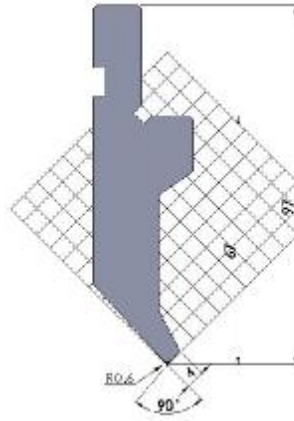
10.150

Max Tons:100t/m



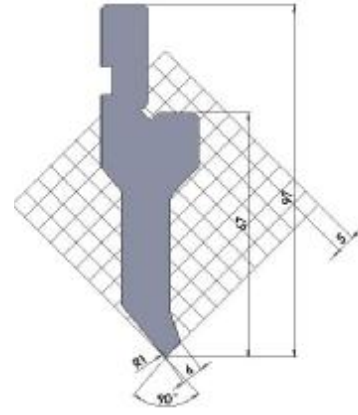
10.151

Max Tons:35t/m



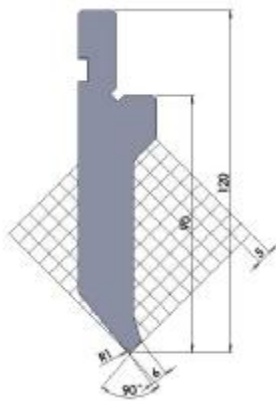
10.152

Max Tons:80t/m



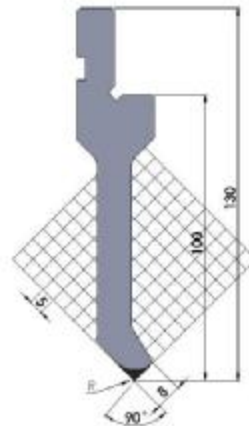
10.153

Max Tons:80t/m



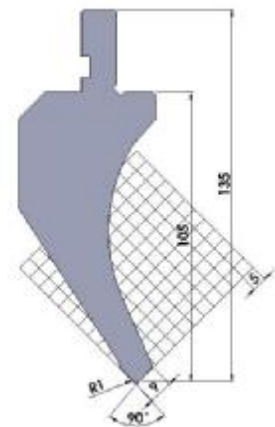
10.154

Max Tons:20t/m



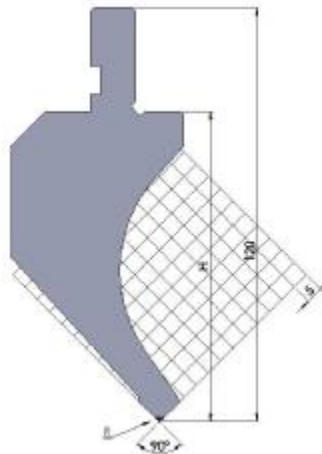
10.155

Max Tons:50t/m



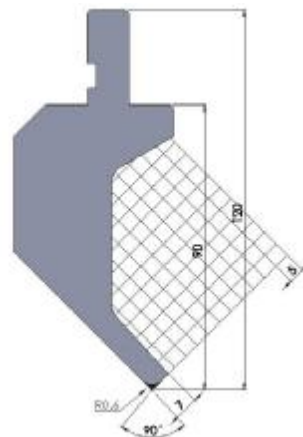
10.156

Max Tons:60t/m



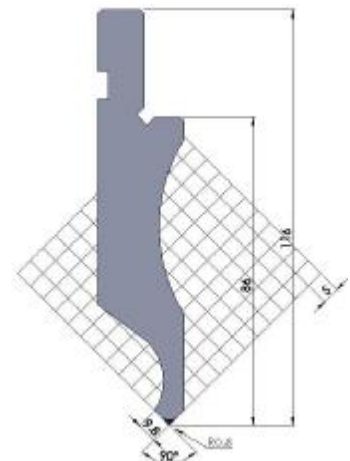
10.157

Max Tons:20t/m



10.158

Max Tons:50t/m

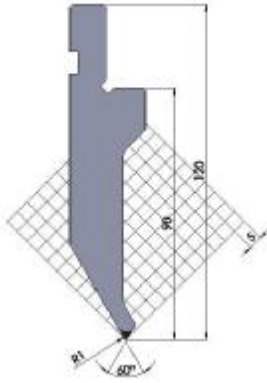


# 标准上模 60°

## Standard punches 60°

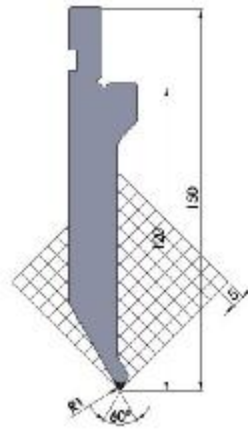
10.170

Max Tons: 80t/m



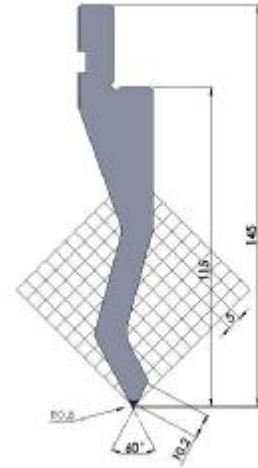
10.171

Max Tons: 80t/m



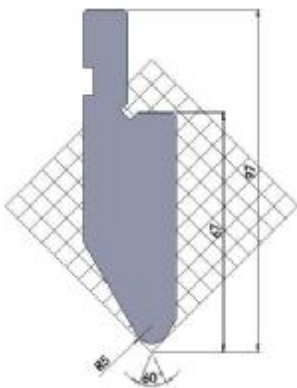
10.172

Max Tons: 70t/m



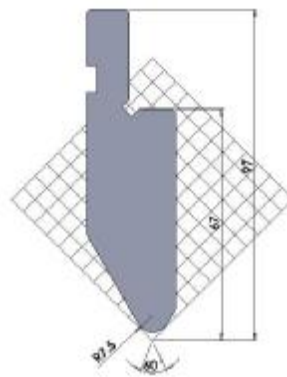
10.173

Max Tons: 100t/m



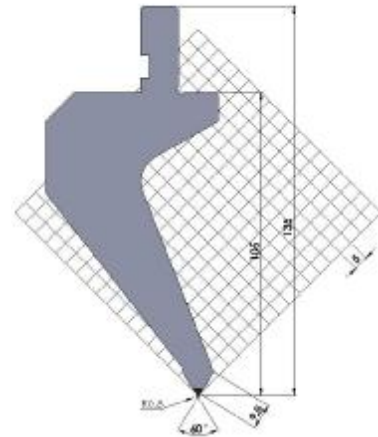
10.174

Max Tons: 100t/m



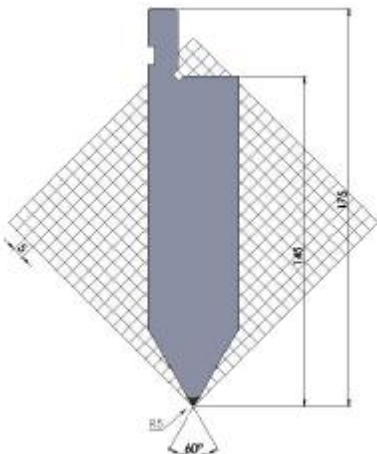
10.175

Max Tons: 60t/m



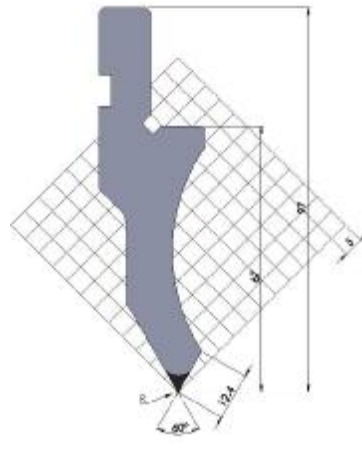
10.176

Max Tons: 160t/m



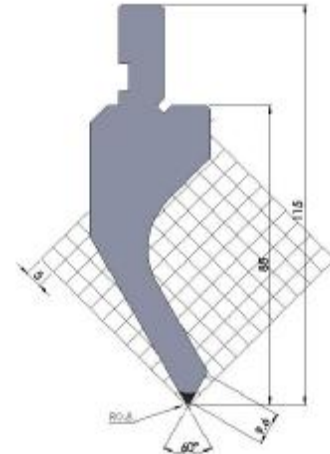
10.177

Max Tons: 60t/m



10.178

Max Tons: 40t/m

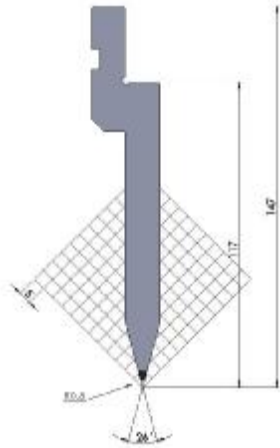


# 标准上模 26° 30° 35°

## Standard punches 26° 30° 35°

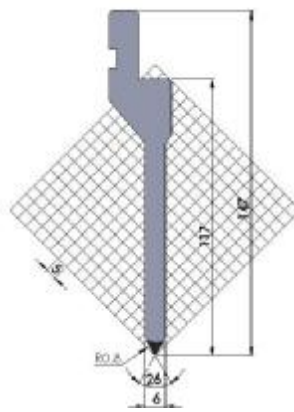
10.190

Max Tons: 80t/m



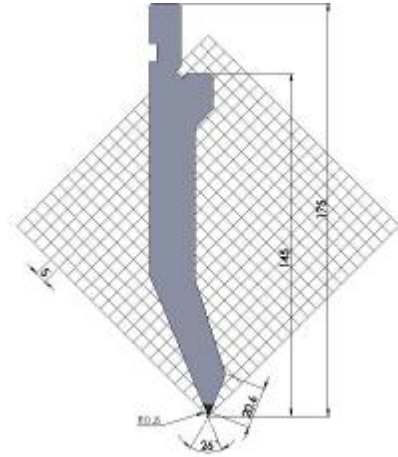
10.191

Max Tons: 80t/m



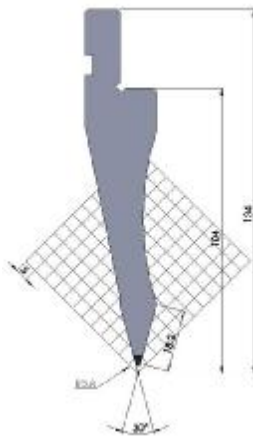
10.192

Max Tons: 90t/m



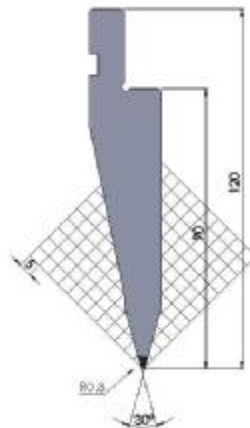
10.193

Max Tons: 70t/m



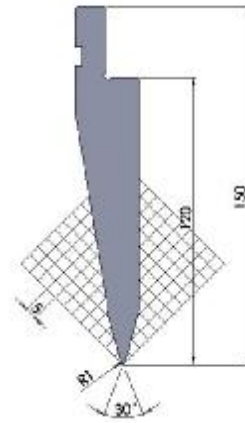
10.194

Max Tons: 100t/m



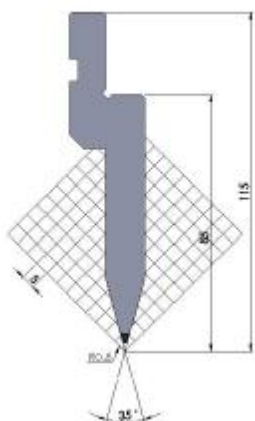
10.195

Max Tons: 100t/m



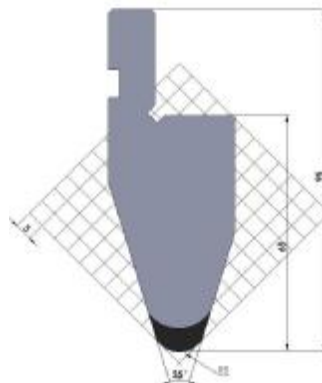
10.196

Max Tons: 80t/m



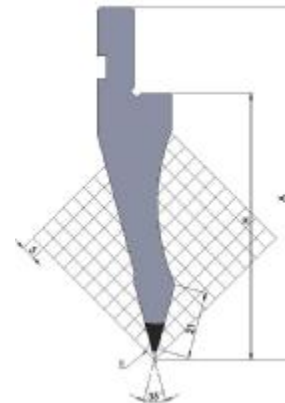
10.197

Max Tons: 160t/m



10.198

Max Tons: 70t/m

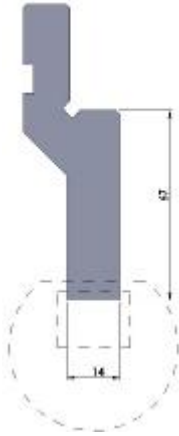


# 标准 R 型圆模

## Standard R-type round tooling

10.210

Max Tons:100t/m



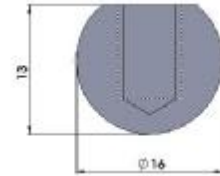
10.211

Max Tons:100t/m



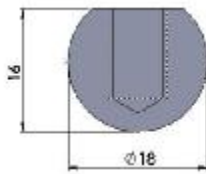
10.212

Max Tons:80t/m



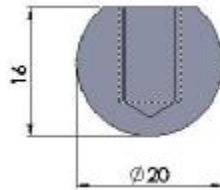
10.213

Max Tons:80t/m



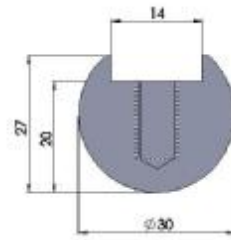
10.214

Max Tons:80t/m



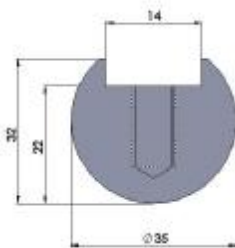
10.215

Max Tons:80t/m



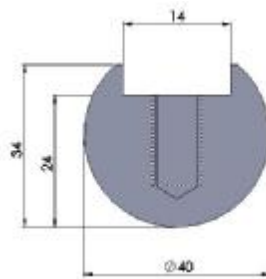
10.216

Max Tons:80t/m



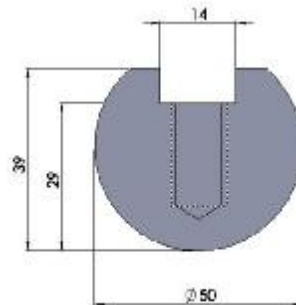
10.217

Max Tons:80t/m



10.218

Max Tons:80t/m



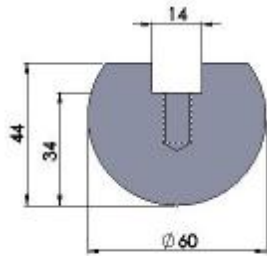


# 标准 R 型圆模

## Standard R-type round tooling

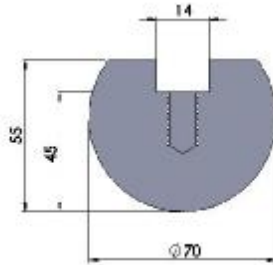
10.219

Max Tons: 80t/m



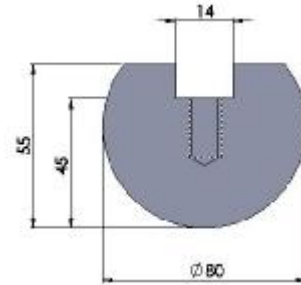
10.220

Max Tons: 80t/m



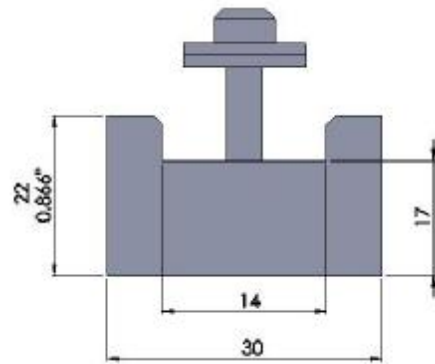
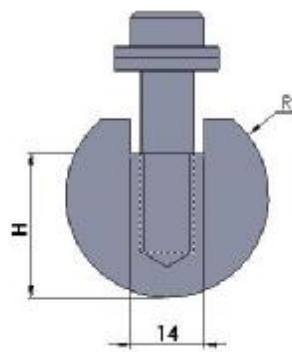
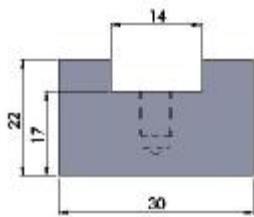
10.221

Max Tons: 80t/m



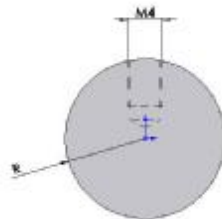
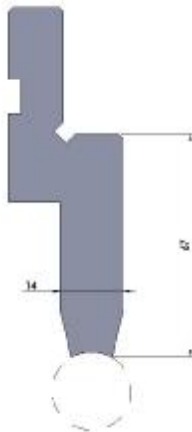
10.222

Max Tons: 80t/m



10.230

Max Tons: 80t/m



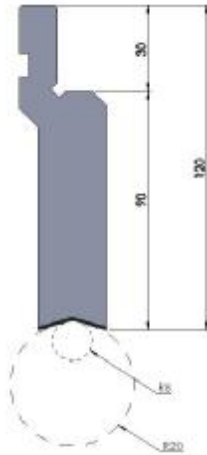
		Rmm		Rmm
10.231	R3	3	R5.5	5.5
10.232	R3.5	3.5	R6	6
10.233	R4	4	R6.5	6.5
10.234	R4.5	4.5	R7	7
10.235	R5	5	R7.5	7.5

# 标准圆模

## Standard round tooling

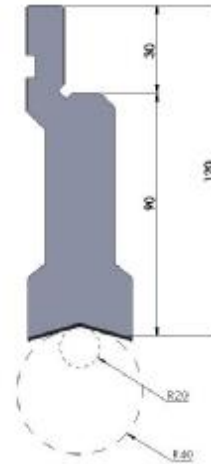
10.240

Max Tons:100t/m

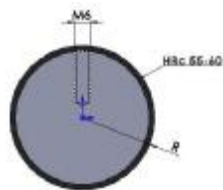
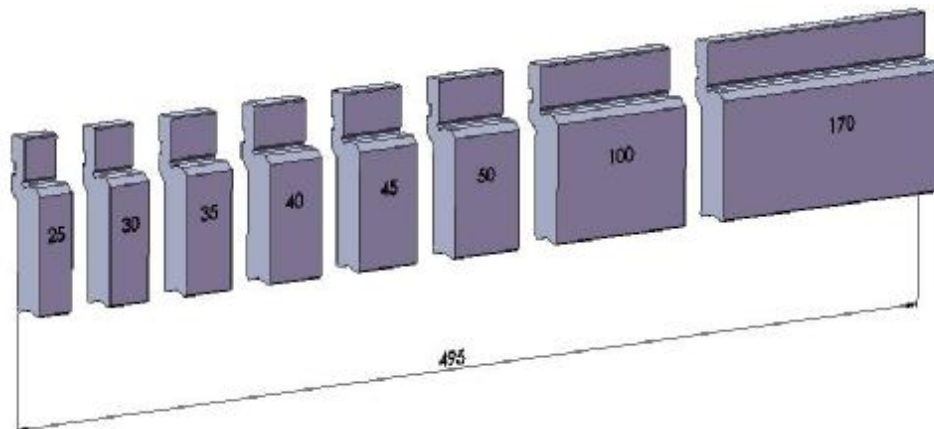


10.241

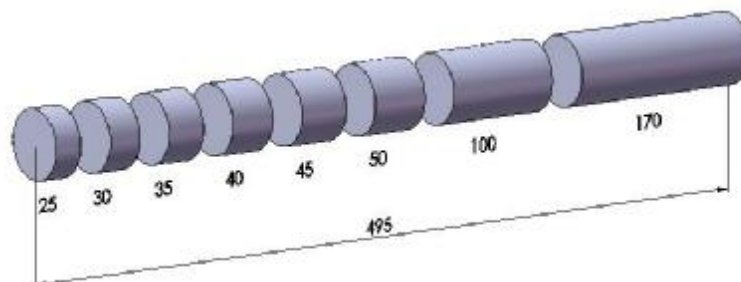
Max Tons:100t/m



### 分段方式 / Segmentation



		Rmm		Rmm
10.242	R8	8	R20	20
10.243	R10	10	R25	25
10.244	R12.5	12.5	R30	30
10.245	R15	15	R35	35
10.246	R17.5	17.5	R40	40



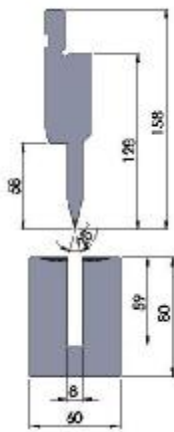
# 复平模具

## Flattening tooling

### 10.250+20.134

10.250 Max Tons:A 80t/m B 100t/m

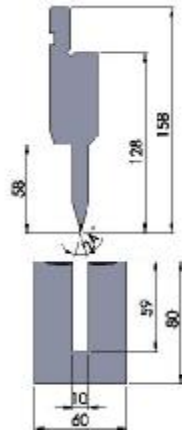
20.134 Max Tons:A 50t/m B 100t/m



### 10.251+20.135

10.251 Max Tons:A 80t/m B 100t/m

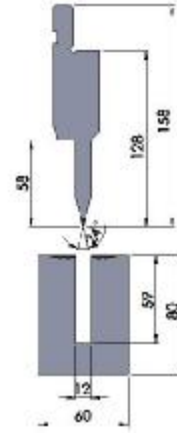
20.135 Max Tons:A 50t/m B 100t/m



### 10.252+20.136

10.252 Max Tons:A 80t/m B 100t/m

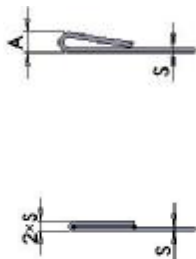
20.136 Max Tons:A 50t/m B 100t/m



A



B



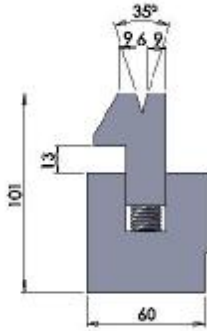
s mm	A mm	450Mpa t/m	700Mpa t/m	s mm	A mm	450Mpa t/m	700Mpa t/m
0.6	3.0	9	15	0.6	1.2	23	35
0.8	3.0	12	20	0.8	1.6	32	50
1.0	3.5	15	25	1.0	2.0	40	60
1.25	3.5	17	26	1.25	2.5	50	80
1.5	4.6	22	38	1.5	3.0	63	95
2.0	5.5	30	50	2.0	4.0	80	130

# 复平模具

## Flattening tooling

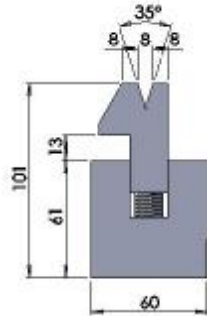
10.260

Max Tons:60t/m



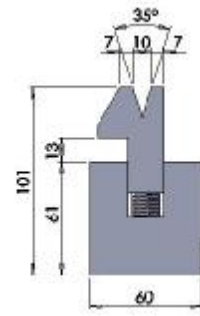
10.261

Max Tons:60t/m



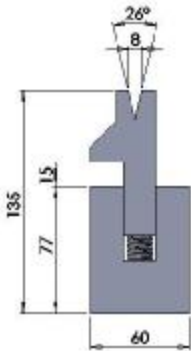
10.262

Max Tons:60t/m



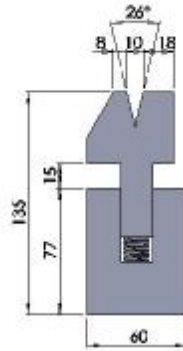
10.263

Max Tons:40t/m



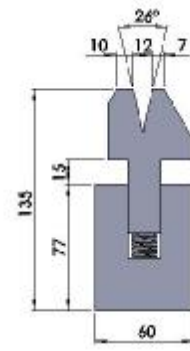
10.264

Max Tons:100t/m



10.265

Max Tons:100t/m



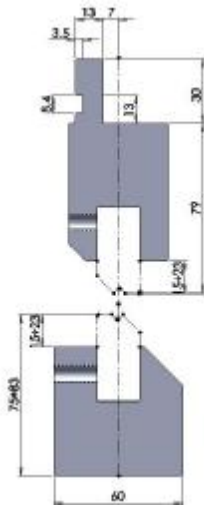
s mm	A mm	450Mpa t/m	700Mpa t/m	s mm	A mm	450Mpa t/m	700Mpa t/m
0.6	3.0	9	15	0.6	1.2	23	35
0.8	3.0	12	20	0.8	1.6	32	50
1.0	3.5	15	25	1.0	2.0	40	60
1.25	3.5	17	26	1.25	2.5	50	80
1.5	4.6	22	38	1.5	3.0	63	95
2.0	5.5	30	50	2.0	4.0	80	130
2.5	6.5	55		2.5	5.0	90	
3.0	8.0	70		3.0	6.0	100	

# 标准 Z 型模

## Standard Z-type tooing

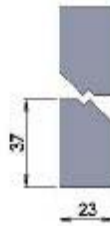
10.270

Max Tons: 100t/m



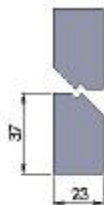
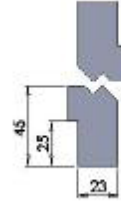
10.271

Max Tons: 100t/m

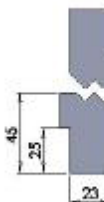


10.272

Max Tons: 100t/m



	Z mm	B°	S max	max t/m
Z-1	1	160°	0.5	100
Z-1.5	1.5	160°	0.6	100
Z-2	2	150°	0.8	100
Z-2.5	2.5	140°	1.0	100
Z-3	3	90°	1.0	100
Z-3.5	3.5	90°	1.2	100
Z-4	4	90°	1.2	100
Z-4.5	4.5	90°	1.5	100
Z-5	5	90°	1.5	100
Z-5.5	5.5	90°	1.5	100
Z-6	6	90°	1.5	100
Z-6.5	6.5	90°	1.5	100
Z-7	7	90°	2	100
Z-7.5	7.5	90°	2	100
Z-8	8	90°	2.5	100



	Z mm	B°	S max	max t/m
Z-9	9	90°	2.5	100
Z-10	10	90°	3	100
Z-11	11	90°	3	100
Z-12	12	90°	3	100

# 上模附件

## Accessories of upper tooling

10.300

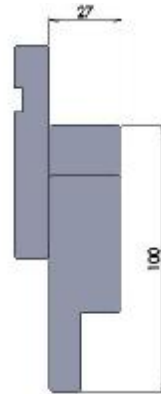


10.301



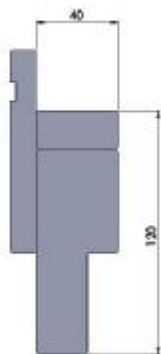
10.302

Max Tons:100t/m



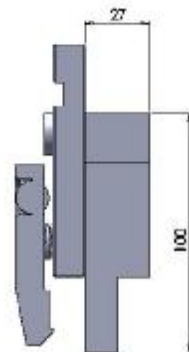
10.303

Max Tons:100t/m



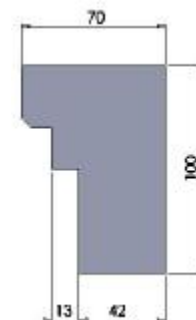
10.304

Max Tons:100t/m



10.305

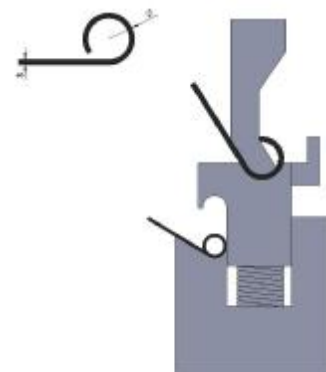
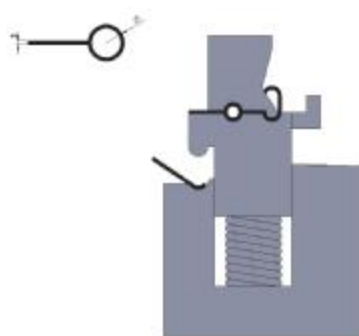
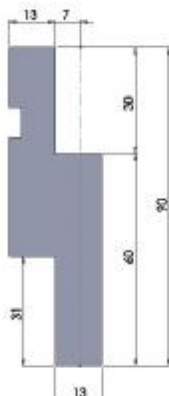
Max Tons:160t/m



10.306

Max Tons:100t/m

特殊折弯方式 / special bending mode

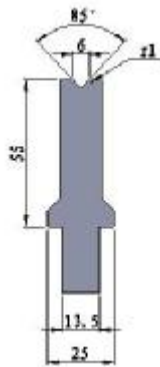


# 1V 下模

## 1V lower dies

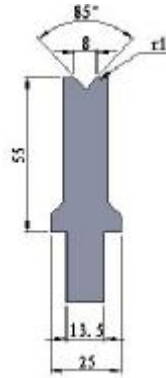
20.100

Max Tons:40t/m



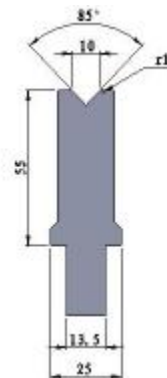
20.101

Max Tons:40t/m



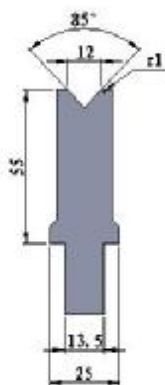
20.102

Max Tons:50t/m



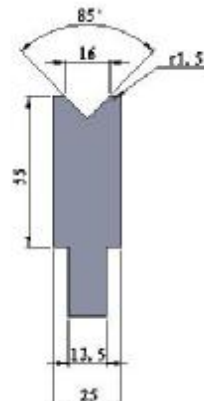
20.103

Max Tons:60t/m



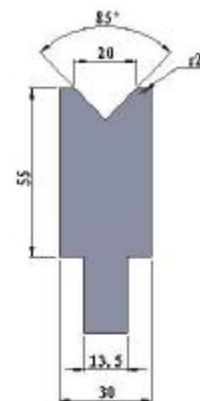
20.104

Max Tons:80t/m



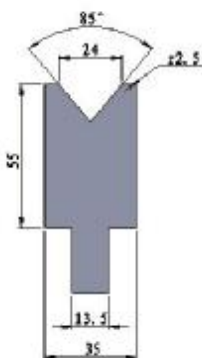
20.105

Max Tons:85t/m



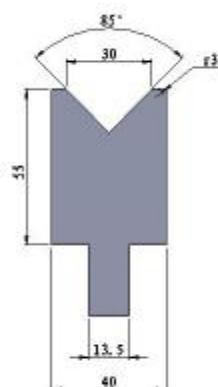
20.106

Max Tons:90t/m



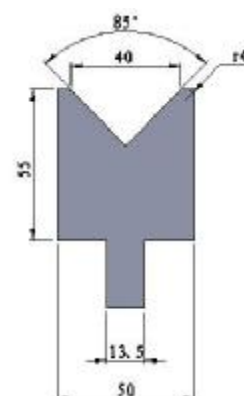
20.107

Max Tons:100t/m



20.108

Max Tons:100t/m

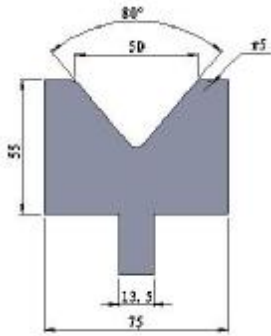


# 1V 下模

## 1V lower dies

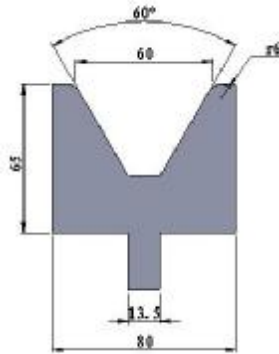
20.109

Max Tons:100t/m



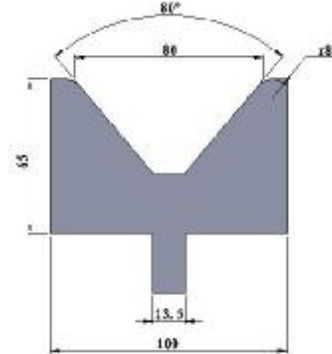
20.110

Max Tons:100t/m



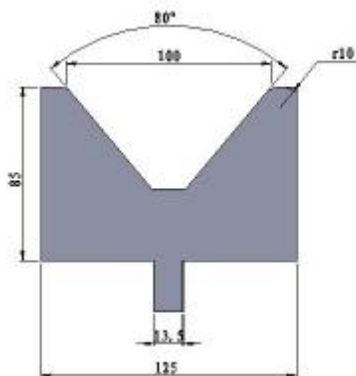
20.111

Max Tons:100t/m



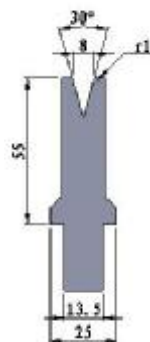
20.112

Max Tons:145t/m



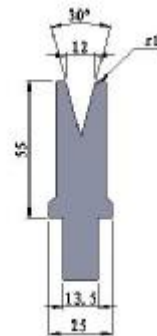
20.120

Max Tons:40t/m



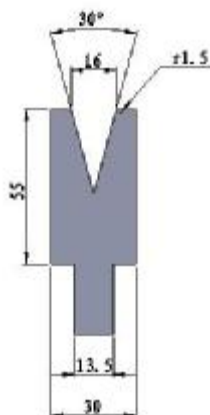
20.121

Max Tons:40t/m



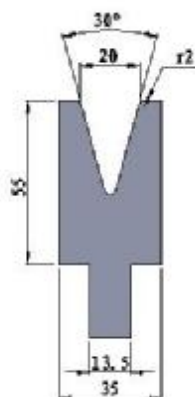
20.122

Max Tons:55t/m



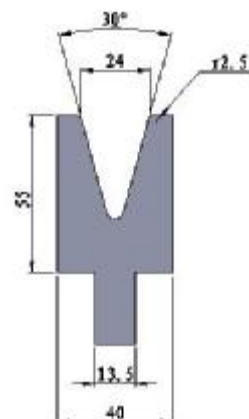
20.123

Max Tons:55t/m



20.124

Max Tons:60t/m



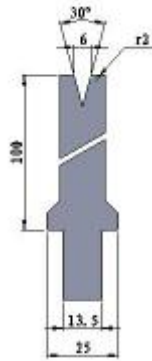


# 1V 下模

## 1V lower dies

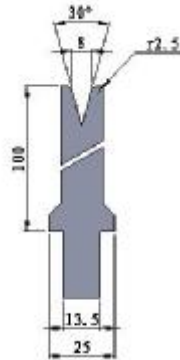
20.125

Max Tons:40t/m



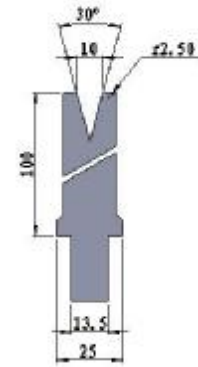
20.126

Max Tons:40t/m



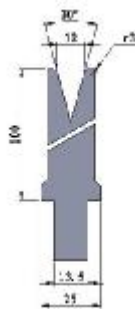
20.127

Max Tons:40t/m



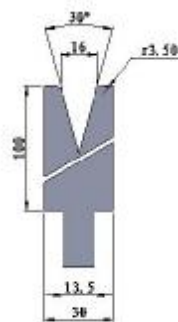
20.128

Max Tons:40t/m



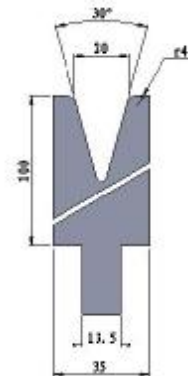
20.129

Max Tons:55t/m



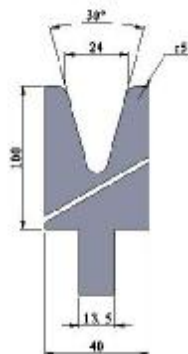
20.130

Max Tons:55t/m



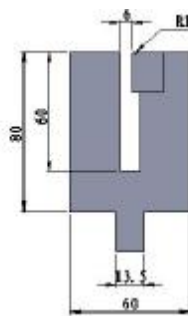
20.131

Max Tons:60t/m



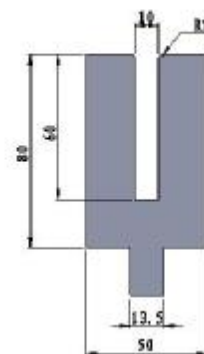
20.132

Max Tons:50t/m



20.133

Max Tons:50t/m

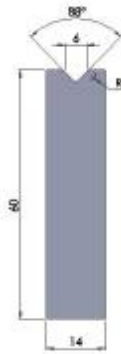


# 1V 下模

## 1V lower dies

20.140

Max Tons:95t/m



20.141

Max Tons:95t/m



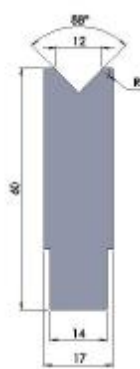
20.142

Max Tons:95t/m



20.143

Max Tons:95t/m



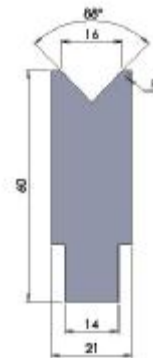
20.144

Max Tons:95t/m



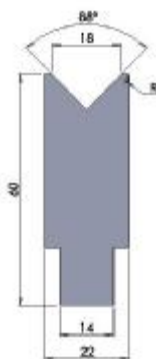
20.145

Max Tons:95t/m



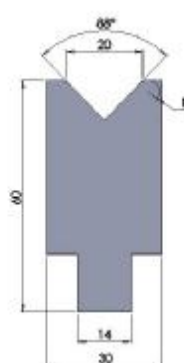
20.146

Max Tons:95t/m



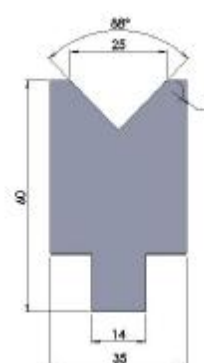
20.147

Max Tons:95t/m



20.148

Max Tons:95t/m

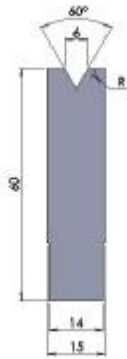


# 1V 下模

## 1V lower dies

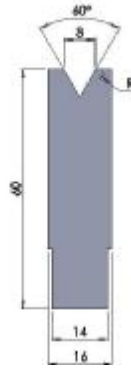
20.160

Max Tons:60t/m



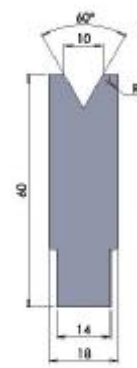
20.161

Max Tons:65t/m



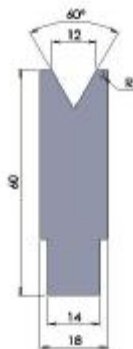
20.163

Max Tons:70t/m



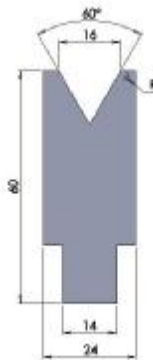
20.164

Max Tons:70t/m



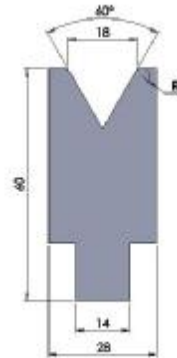
20.165

Max Tons:70t/m



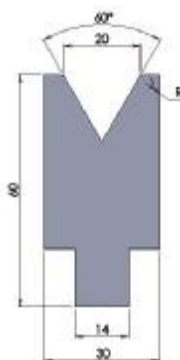
20.166

Max Tons:70t/m



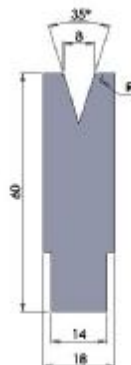
20.167

Max Tons:70t/m



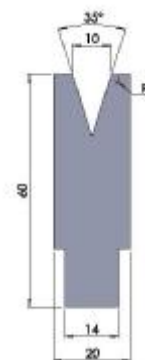
20.168

Max Tons:65t/m



20.169

Max Tons:70t/m

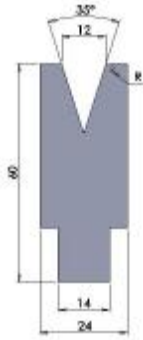


# 1V 下模

## 1V lower dies

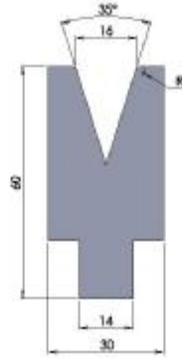
20.170

Max Tons:70t/m



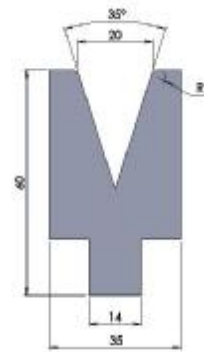
20.171

Max Tons:70t/m



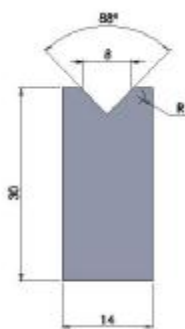
20.172

Max Tons:70t/m



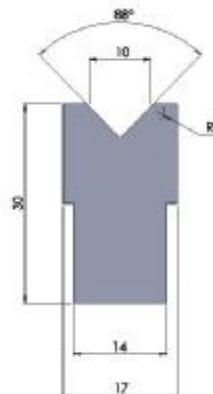
20.173

Max Tons:95t/m



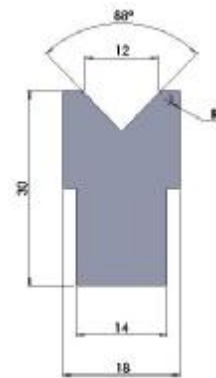
20.174

Max Tons:95t/m

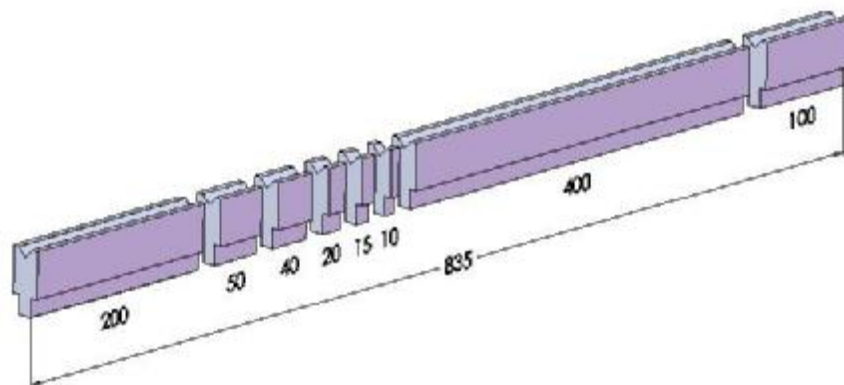


20.175

Max Tons:95t/m



分段方式 / Segmentation of lower tools



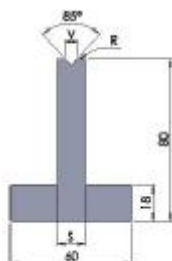
# 1V 下模

## 1V lower dies

### 20.350/Tx

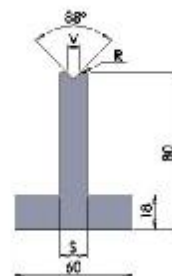
Max Tons:100t/m

	Vmm	Rmm	Smm	max t/m
T6	6	0.4	14	100
T8	8	0.5	14	100
T10	10	0.8	18	100
T12	12	2.75	18	100
T16	16	2.75	24	100
T20	20	3	30	100
T25	25	3	35	100
TR6	6	2.75	14	100
TR8	8	2.75	14	100
TR10	10	2.75	18	100



### 20.351/Tx

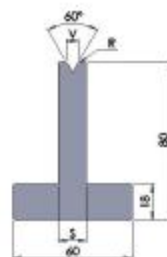
Max Tons:100t/m



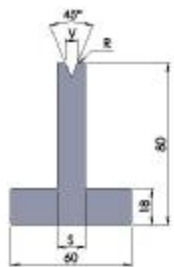
### 20.352/Tx

Max Tons:60t/m

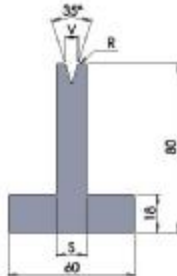
	Vmm	Rmm	Smm	max t/m
T6	6	0.5	14	60
T8	8	0.8	14	60
T10	10	0.8	18	60
T12	12	0.8	18	60
T16	16	2.75	24	60
T20	20	3	30	60
T25	25	3	35	60
TR6	6	1.5	14	60
TR8	8	1.5	14	60
TR10	10	2.75	18	60
TR12	12	2.75	18	60



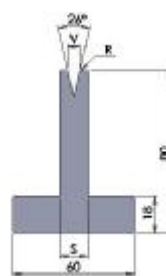
### 20.353/Tx



### 20.354/Tx



### 20.355/Tx



	Vmm	Rmm	Smm	max t/m		Vmm	Rmm	Smm	max t/m		Vmm	Rmm	Smm	max t/m
T6	6	0.8	14	50	T6	6	0.8	14	35	T6	6	0.8	16	20
T8	8	1	18	50	T8	8	1	16	35	T8	8	1	20	20
T10	10	1.2	18	50	T10	10	1.2	20	40	T10	10	1.2	24	20
T12	12	1.6	24	50	T12	12	1.6	22	40	T12	12	1.6	26	20
T16	16	2.75	26	50	T16	16	3	30	45					
T20	20	3	30	50	T20	20	3	35	50					
T25	25	3	37	50	T25	25	3	40	50					

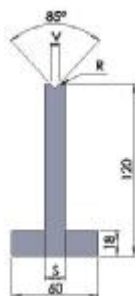
# 1V 下模

## 1V lower dies

### 20.356/Tx

Max Tons:100t/m

	Vmm	Rmm	Smm	max t/m
T6	6	0.4	14	100
T8	8	0.5	14	100
T10	10	0.8	18	100
T12	12	2.75	18	100
T16	16	2.75	24	100
T20	20	3	30	100
T25	25	3	35	100
TR6	6	2.75	14	100
TR8	8	2.75	14	100
TR10	10	2.75	18	100



### 20.357/Tx

Max Tons:100t/m



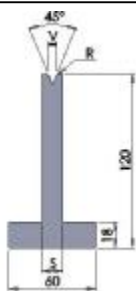
### 20.358/Tx

Max Tons:60t/m

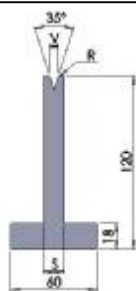
	Vmm	Rmm	Smm	max t/m
T6	6	0.5	14	60
T8	8	0.8	14	60
T10	10	0.8	18	60
T12	12	0.8	18	60
T16	16	2.75	24	60
T20	20	3	30	60
T25	25	3	35	60
TR6	6	1.5	14	60
TR8	8	1.5	14	60
TR10	10	2.75	18	60
TR12	12	2.75	18	60



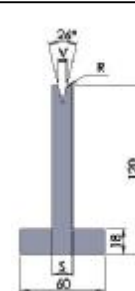
### 20.359/Tx



### 20.360/Tx



### 20.361/Tx



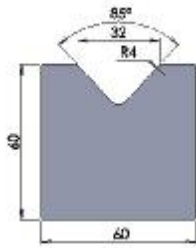
	Vmm	Rmm	Smm	max t/m		Vmm	Rmm	Smm	max t/m		Vmm	Rmm	Smm	max t/m
T6	6	0.8	14	50	T6	6	0.8	14	35	T6	6	0.8	16	20
T8	8	1	18	50	T8	8	1	16	35	T8	8	1	20	20
T10	10	1.2	18	50	T10	10	1.2	20	40	T10	10	1.2	24	20
T12	12	1.6	24	50	T12	12	1.6	22	40	T12	12	1.6	26	20
T16	16	2.75	26	50	T16	16	3	30	45					
T20	20	3	30	50	T20	20	3	35	50					
T25	25	3	37	50	T25	25	3	40	50					

# 1V 下模

## 1V lower dies

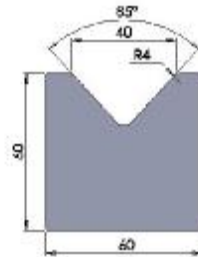
20.400

Max Tons:100t/m



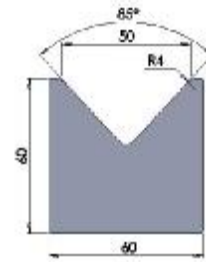
20.401

Max Tons:100t/m



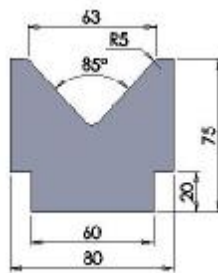
20.402

Max Tons:100t/m



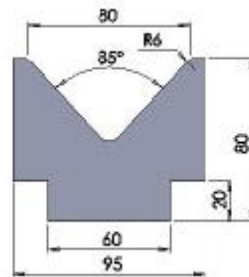
20.403

Max Tons:100t/m



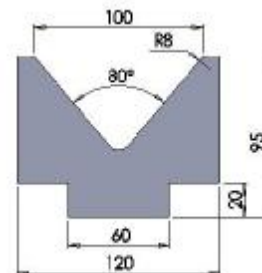
20.404

Max Tons:100t/m



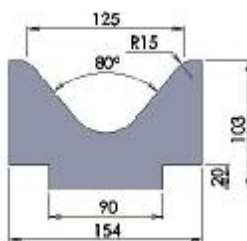
20.410

Max Tons:100t/m



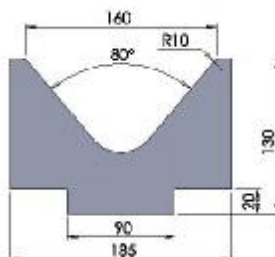
20.411

Max Tons:100t/m



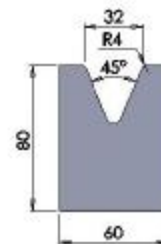
20.412

Max Tons:100t/m



20.420

Max Tons:100t/m

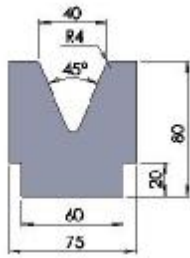


# 1V 下模

## 1V lower dies

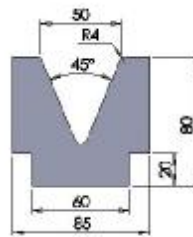
20.421

Max Tons:100t/m



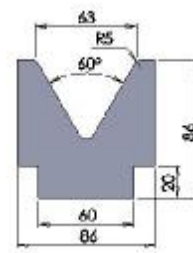
20.422

Max Tons:100t/m



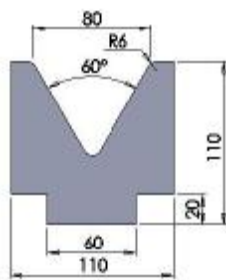
20.430

Max Tons:100t/m



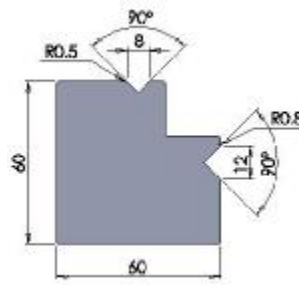
20.431

Max Tons:100t/m



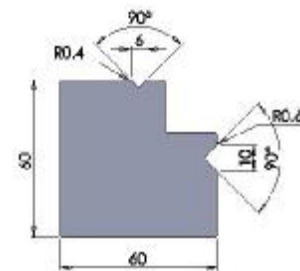
20.440

Max Tons:80t/m

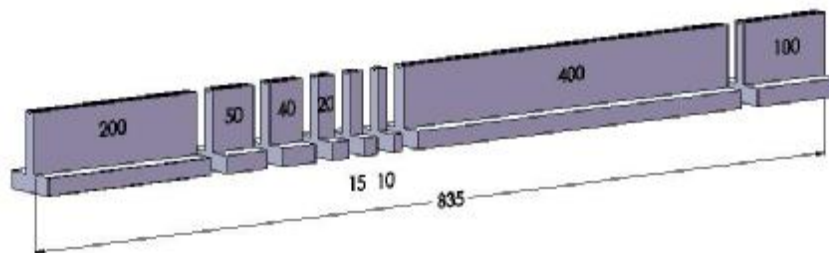


20.441

Max Tons:80t/m



分段方式 / Segmentation of lower dies





# 1V 下模

## 1V lower dies

低划伤下模 / Low Friction Dies 20.181~20.186

---

复合模具用于自由折弯

Compound dies are press brake dies for “airbending” only.

可最大程度地减少压痕

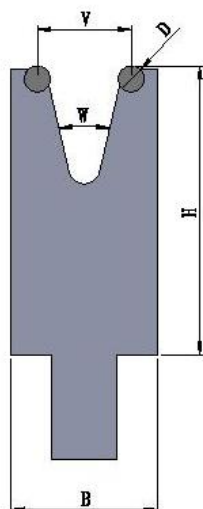
Minimal marking on the bend parts.

圆棒可以更换，以防磨损

The die bars are interchangeable in case of wear.

特殊的应用，圆棒可以选用不同材料，有镀锡、青铜或非金属圆棒

Choise of optimal radius material, Bronze or non metallic bars can be supplied for special application, The bars can be TIN coated for longer life and less friction.



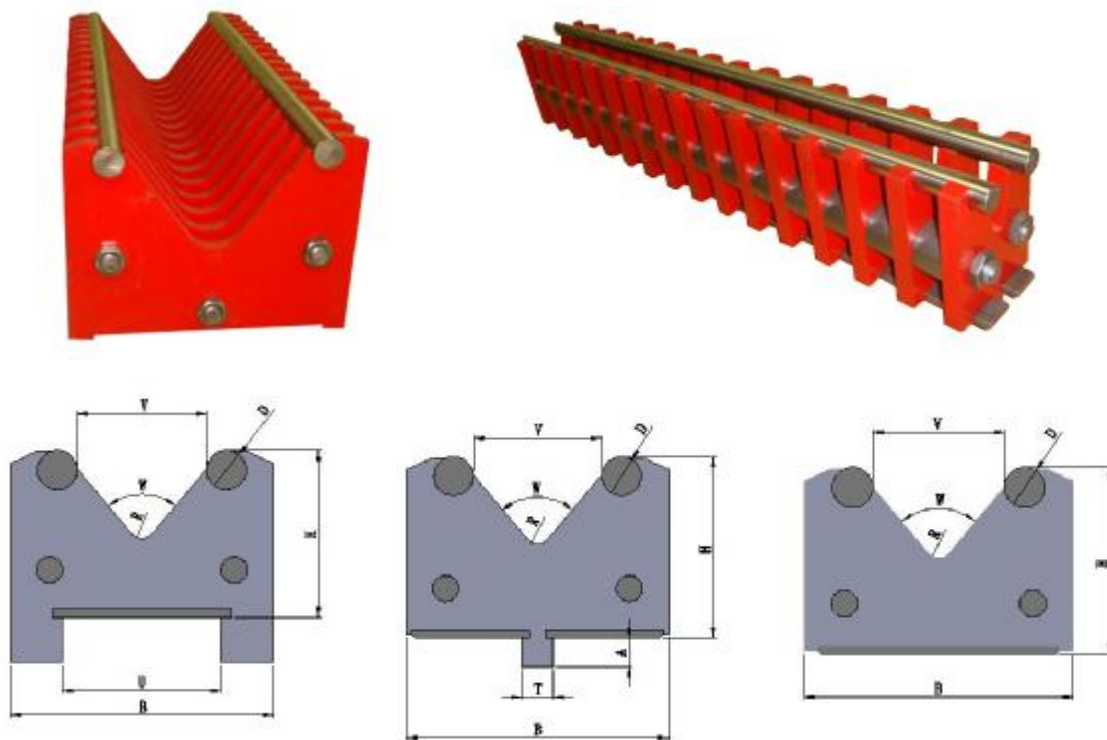
	V mm	D mm	W (°)	B mm	H mm	Max Tons t/m
20.181	8	3	30	20	55	20
20.182	12	4	30	24	55	30
20.183	16	5	30	28	55	40
20.184	20	5	30	32	55	45
20.185	24	6	30	40	55	50
20.186	32	8	60	52	55	60



# 1V 下模

## 1V lower dies

低划伤下模 / Low Friction Dies 20.191~20.204



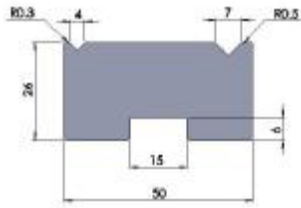
	V mm	D mm	W (°)	B mm	H mm	R mm	Max Tons t/m
20.191	32	10	28	53	55	5	50
20.192	32	10	85	53	55	5	70
20.193	40	10	85	62	55	5	80
20.194	48	10	85	70	55	5	90
20.195	50	15	40	85	90	7	80
20.196	60	15	40	110	110	10	100
20.197	80	20	50	150	130	10	120
20.198	100	20	60	170	140	18	150
20.199	120	25	60	190	160	18	180
20.200	150	25	60	235	180	25	200
20.201	200	30	80	300	220	30	250
20.202	250	30	80	350	300	40	300
20.203	300	40	80	440	360	40	400
20.204	400	50	80	570	400	50	500

## 2V 下模

### 2V lower dies

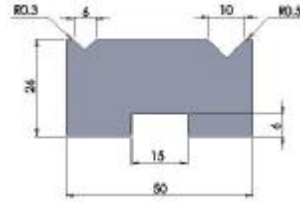
20.220

Max Tons: 70t/m



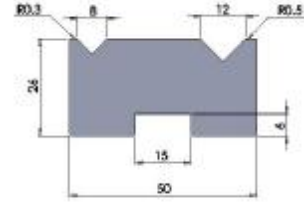
20.221

Max Tons: 80t/m



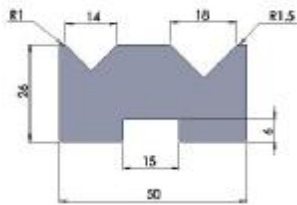
20.222

Max Tons: 80t/m



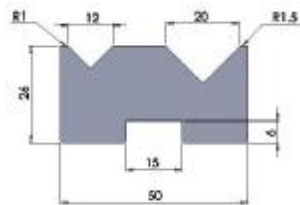
20.223

Max Tons: 80t/m



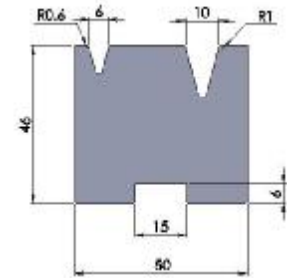
20.224

Max Tons: 80t/m



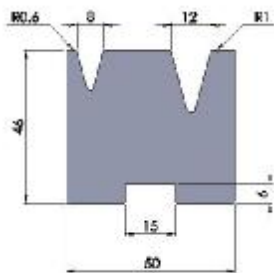
20.230

Max Tons: 60t/m



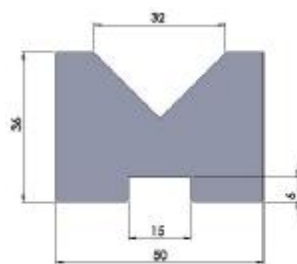
20.231

Max Tons: 60t/m



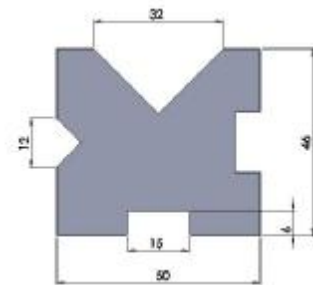
20.232

Max Tons: 100t/m



20.233

Max Tons: 100t/m

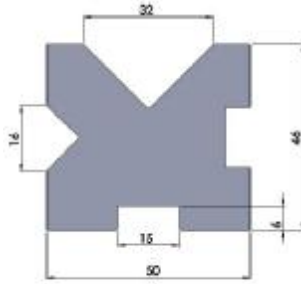


## 2V 下模

### 2V lower dies

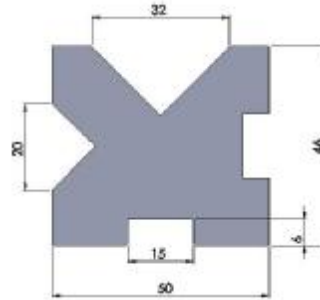
20.234

Max Tons:100t/m



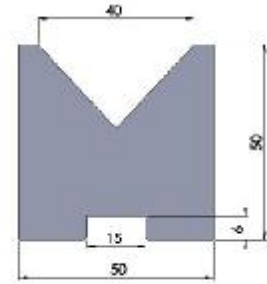
20.235

Max Tons:100t/m



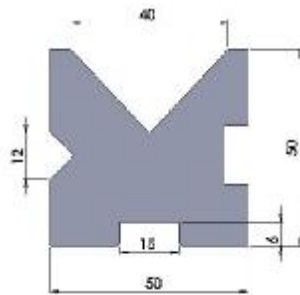
20.236

Max Tons:100t/m



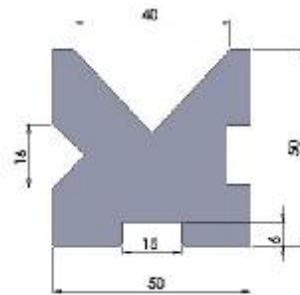
20.237

Max Tons:100t/m



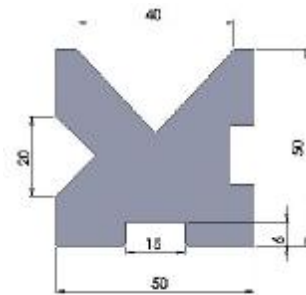
20.238

Max Tons:100t/m



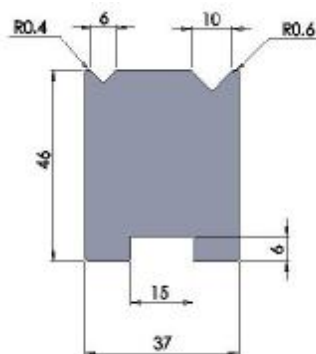
20.239

Max Tons:100t/m



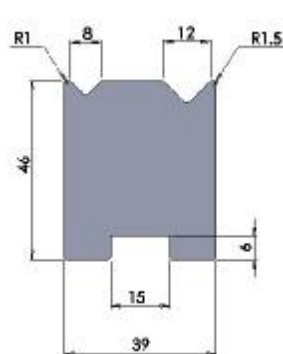
20.250

Max Tons:80t/m



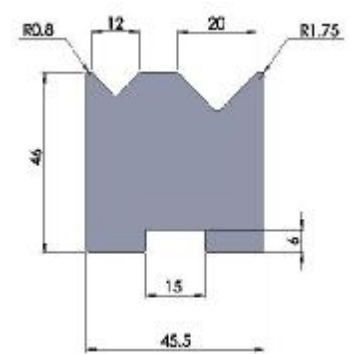
20.251

Max Tons:80t/m



20.252

Max Tons:80t/m

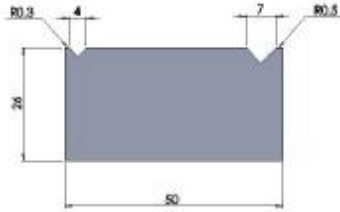


# 2V 下模

## 2V lower dies

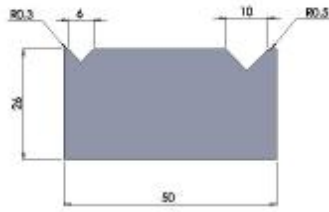
20.300

Max Tons: 70t/m



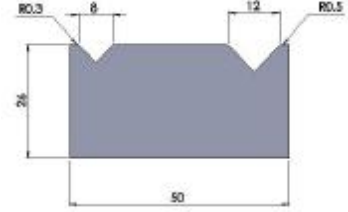
20.301

Max Tons: 80t/m



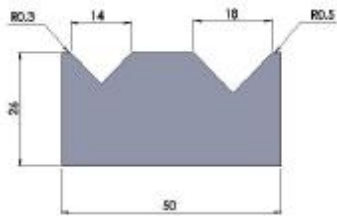
20.302

Max Tons: 80t/m



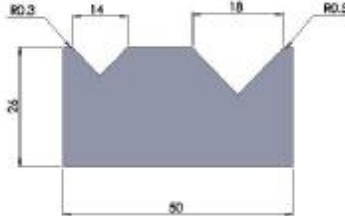
20.303

Max Tons: 100t/m



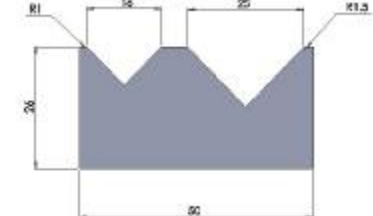
20.304

Max Tons: 100t/m



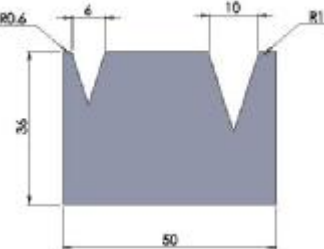
20.305

Max Tons: 100t/m



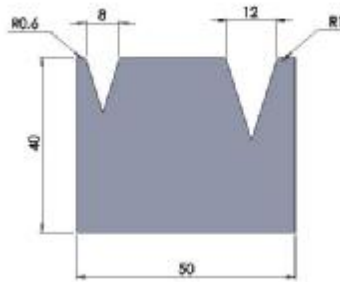
20.306

Max Tons: 60t/m



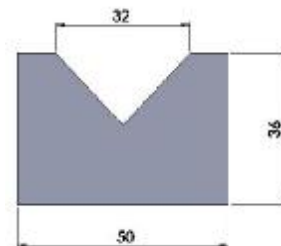
20.307

Max Tons: 60t/m



20.308

Max Tons: 100t/m

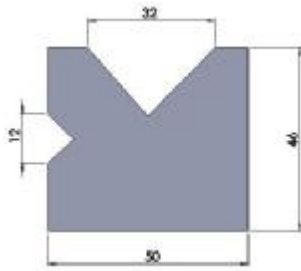


## 2V 下模

### 2V lower dies

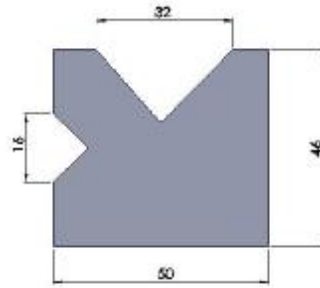
20.320

Max Tons:100t/m



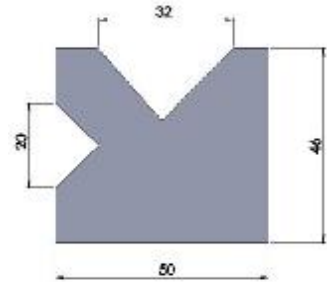
20.321

Max Tons:100t/m



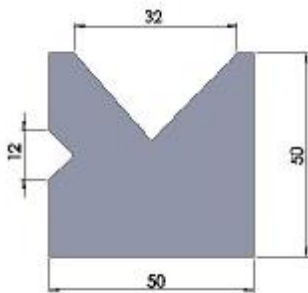
20.322

Max Tons:100t/m



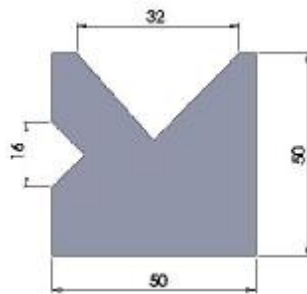
20.323

Max Tons:100t/m



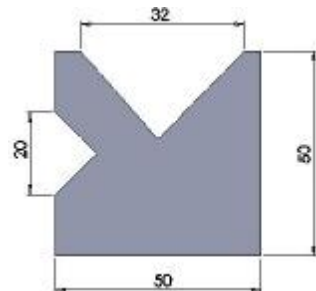
20.324

Max Tons:100t/m



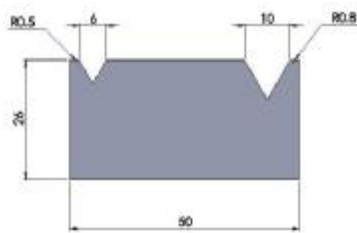
20.325

Max Tons:100t/m



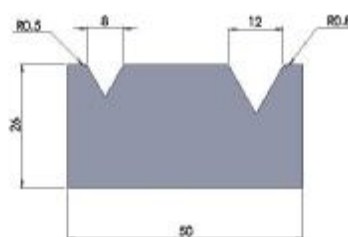
20.340

Max Tons:60t/m



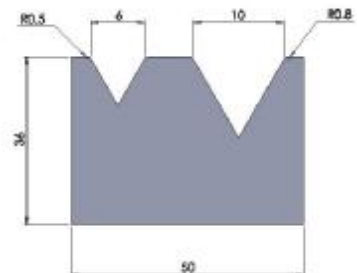
20.341

Max Tons:60t/m



20.342

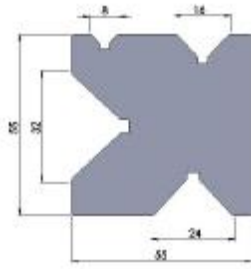
Max Tons:60t/m



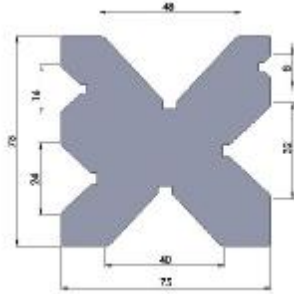
# 多 V 下模

## multi-V lower dies

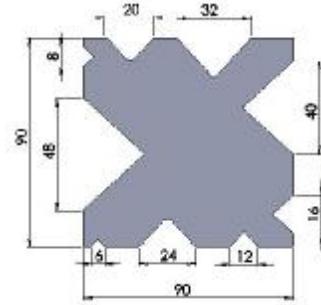
20.500



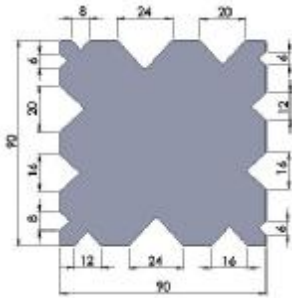
20.501



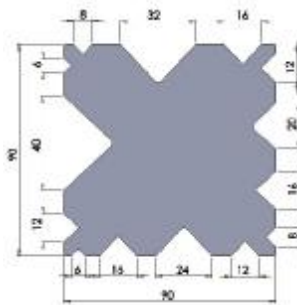
20.502



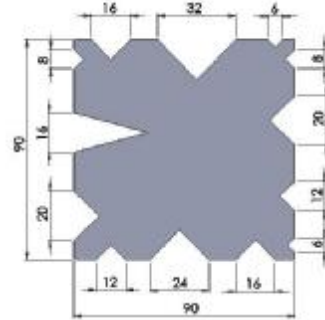
20.503



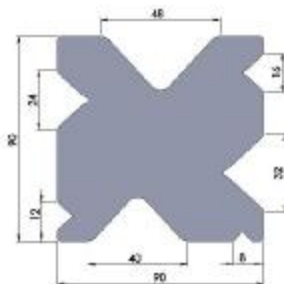
20.504



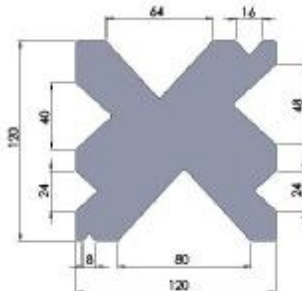
20.505



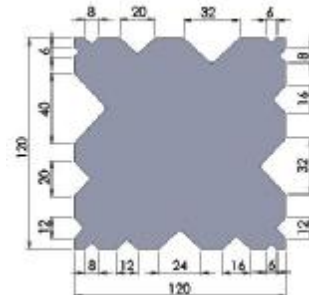
20.506



20.507



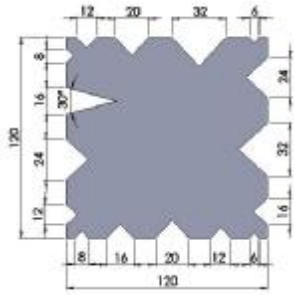
20.508



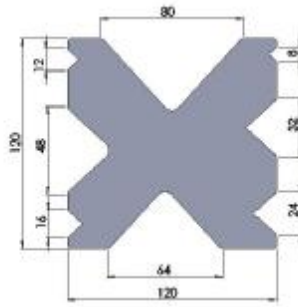
# 多 V 下模

## multi-V lower dies

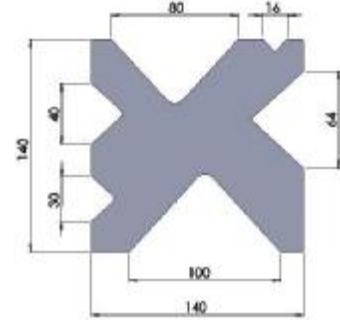
20.509



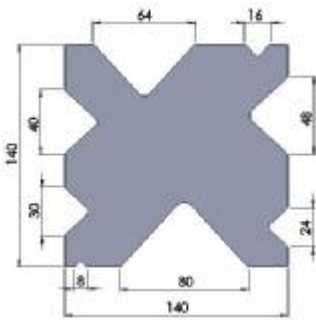
20.510



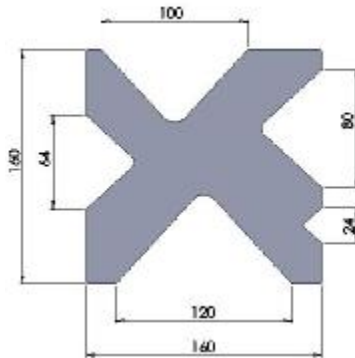
20.511



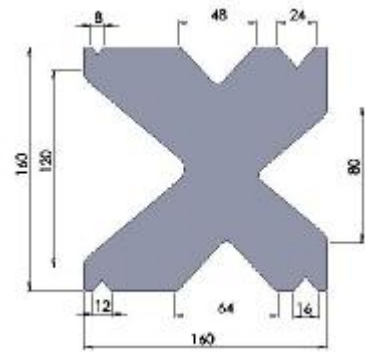
20.512



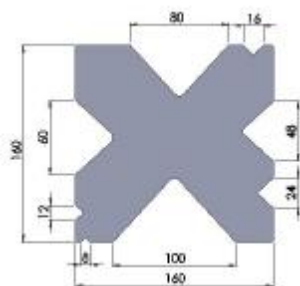
20.513



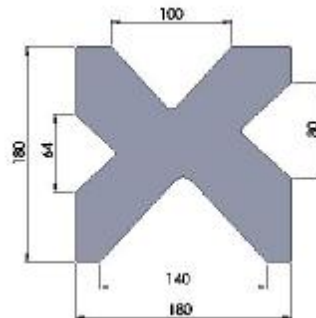
20.514



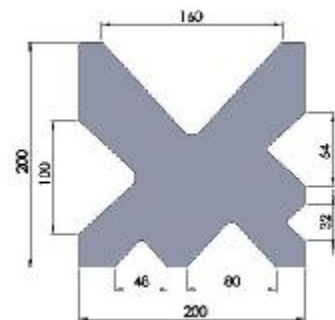
20.515



20.516



20.517

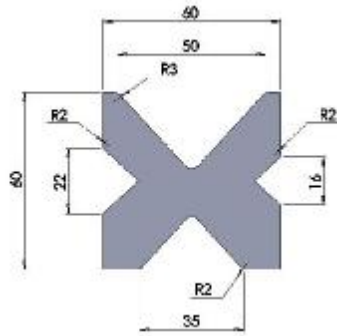




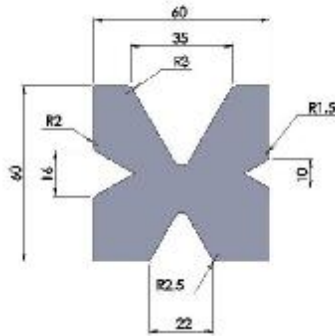
## 多 V 下模

multi-V lower dies

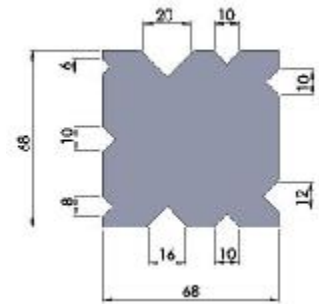
20.530



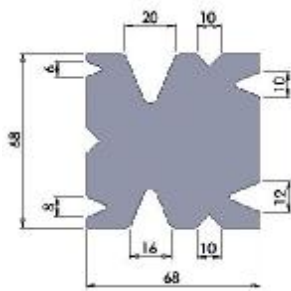
20.531



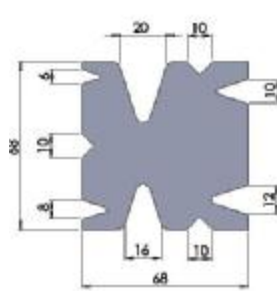
20.540



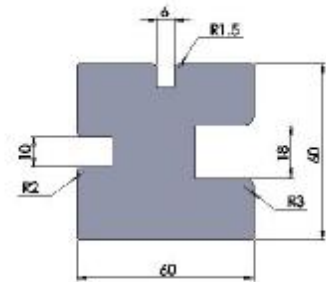
20.541



20.550



20551

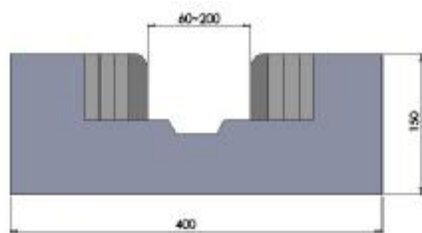


## 组合凹模

Combined dies

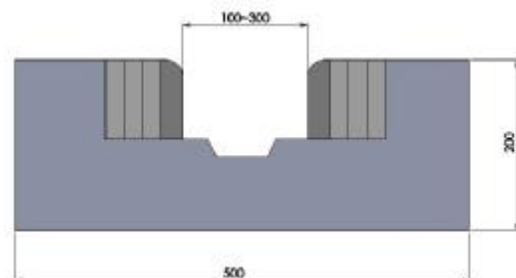
20.560

Max Tons:200t/m



20.561

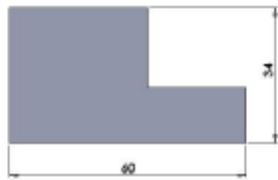
Max Tons:250t/m



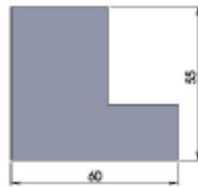
## 下模附件

### Accessories of lower dies

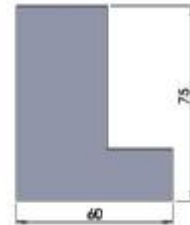
20.600



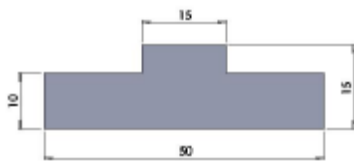
20.601



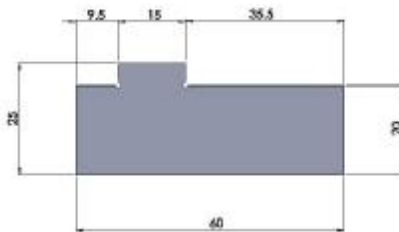
20.602



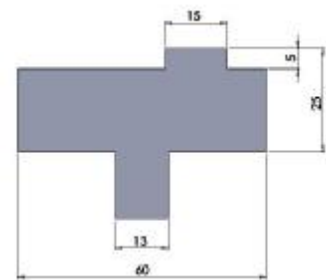
20.603



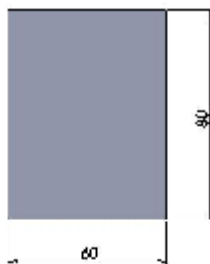
20.604



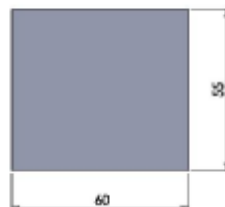
20.605



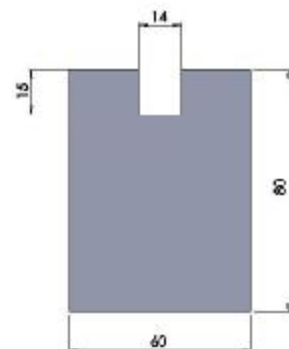
20.606



20.607



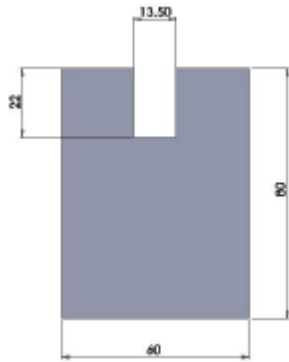
20.608



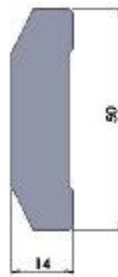
## 下模附件

### Accessories of lower dies

20.609



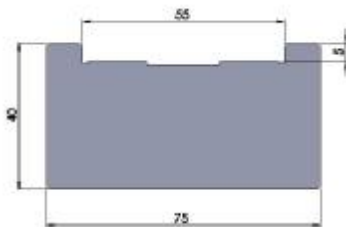
20.610



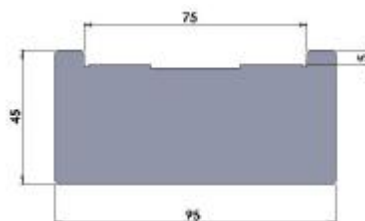
20.611



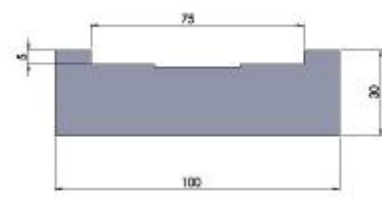
20.612



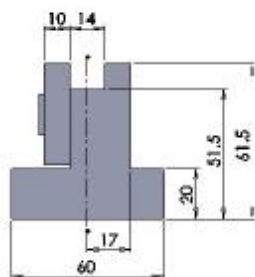
20.613



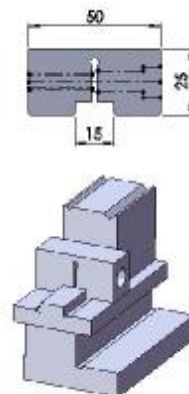
20.614



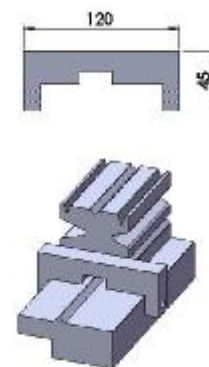
20.615



20.616



20.617





无锡金球机械有限公司

WUXI JINQIU MACHINERY CO.,LTD.

江苏无锡钱桥钱洛路 99 号

99 QIANLUO ROAD QIANQIAO WUXI JIANGSU CHINA

TEL: 86-510-82569552 13961729519

FAX:86-510-83212533

Email: [info@jinqiu-machine.com](mailto:info@jinqiu-machine.com)

[www.jinqiu-machine.com](http://www.jinqiu-machine.com)